

ENaC Gamma Polyclonal Antibody

Description

Product type	Primary Antibody
Code	BT-AP02949
Host	Rabbit
Isotype	IgG
Size	20ul, 50ul, 100ul
Immunogen	The antiserum was produced against synthesized peptide derived from human ENaC gamma. AA range:132-181
Mol wt	74270
Species reactivity	Human, Mouse, Rat
Clonality	Polyclonal
Recommended application	WB, ELISA
Concentration	1 mg/ml
Full name	ENaC gamma Antibody
Synonyms	SCNN1G; Amiloride-sensitive sodium channel subunit gamma; Epithelial Na(+) channel subunit gamma; ENaCG; Gamma-ENaC; Gamma-NaCH; Nonvoltage-gated sodium channel 1 subunit gamma; SCNEG

This product is for research use only, not for use in human, therapeutic or diagnostic procedure.

Background

Nonvoltage-gated, amiloride-sensitive, sodium channels control fluid and electrolyte transport across epithelia in many organs. These channels are heteromeric complexes consisting of 3 subunits: alpha, beta, and gamma. SCNN1G encodes the gamma subunit, and mutations in this gene have been associated with Liddle syndrome.

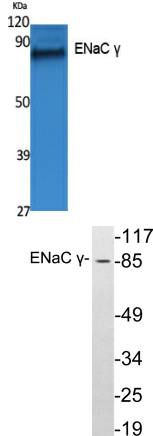
Recommended Dilution

WB: 1: 500 - 1: 2000

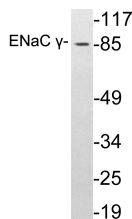
ELISA: 1: 20000

Not yet tested in other applications.

Images



Western Blot analysis of extracts from A549 cells, using ENaC γ Polyclonal Antibody. Antibody was diluted at 1:500. Secondary antibody was diluted at 1:20000



Western blot analysis of lysates from A549 cells, using ENaC γ antibody.

Storage

-20°C for one year

501 Changsheng S Rd, Nanhu Dist, Jiaxing, Zhejiang, China

Tel: 86 21 31007137 | E-mail: save@bt-laboratory.com | www.bt-laboratory.com