

ENaCDelta Polyclonal Antibody

Description

Product type	Primary Antibody
Code	BT-AP02950
Host	Rabbit
Isotype	IgG
Size	20ul, 50ul, 100ul
Immunogen	The antiserum was produced against synthesized peptide derived from human SCNN1D. AA range:411-460
Mol wt	70215
Species reactivity	Human
Clonality	Polyclonal
Recommended application	WB, IF, ELISA
Concentration	1 mg/ml
Full name	ENaCdelta Antibody
Synonyms	SCNN1D; DNACH; Amiloride-sensitive sodium channel subunit delta; Delta-NaCH; Epithelial Na(+) channel subunit delta; Delta-ENaC; ENaCD; Nonvoltage-gated sodium channel 1 subunit delta; SCNED

This product is for research use only, not for use in human, therapeutic or diagnostic procedure.

Background

SCNN1D (Sodium Channel Epithelial 1 Delta Subunit) is a Protein Coding gene. Among its related pathways are Activation of cAMP-Dependent PKA and Neuropathic Pain-Signaling in Dorsal Horn Neurons. GO annotations related to this gene include sodium channel activity and ligand-gated sodium channel activity. An important paralog of this gene is SCNN1G.

Recommended Dilution

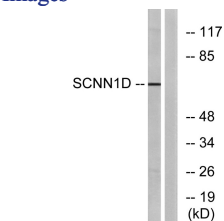
WB: 1: 500 - 1: 2000

IF: 1: 200 - 1: 1000

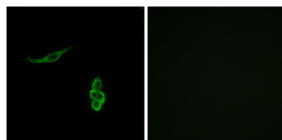
ELISA: 1: 20000

Not yet tested in other applications.

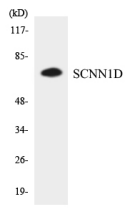
Images



Western blot analysis of lysates from RAW264.7 cells, using SCNN1D Antibody. The lane on the right is blocked with the synthesized peptide.



Immunofluorescence analysis of A549 cells, using SCNN1D Antibody. The picture on the right is blocked with the synthesized peptide.



Western blot analysis of the lysates from HT-29 cells using SCNN1D antibody.

Storage

-20°C for one year

501 Changsheng S Rd, Nanhu Dist, Jiaxing, Zhejiang, China

Tel: 86 21 31007137 | E-mail: save@bt-laboratory.com | www.bt-laboratory.com