

Encephalopsin Polyclonal Antibody

Description

Product type	Primary Antibody
Code	BT-AP02951
Host	Rabbit
Isotype	IgG
Size	20ul, 50ul, 100ul
Immunogen	The antiserum was produced against synthesized peptide derived from human OPN3. AA range:161-210
Mol wt	44873
Species reactivity	Human, Mouse
Clonality	Polyclonal
Recommended application	WB, IHC-p, IF, ELISA
Concentration	1 mg/ml
Full name	Encephalopsin Antibody
Synonyms	OPN3; ECPN; Opsin-3; Encephalopsin; Panopsin

This product is for research use only, not for use in human, therapeutic or diagnostic procedure.

Background

Opsins are members of the guanine nucleotide-binding protein (G protein)-coupled receptor superfamily. In addition to the visual opsins, mammals possess several photoreceptive non-visual opsins that are expressed in extraocular tissues. This gene, opsin 3, is strongly expressed in brain and testis and weakly expressed in liver, placenta, heart, lung, skeletal muscle, kidney, and pancreas. OPN3 may also be expressed in the retina. The protein has the canonical features of a photoreceptive opsin protein.

Recommended Dilution

WB: 1: 500 - 1: 2000

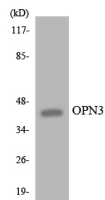
IHC: 1: 100 - 1: 300

IF: 1: 200 - 1: 1000

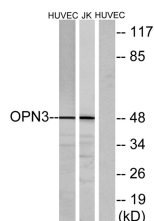
ELISA: 1: 10000

Not yet tested in other applications.

Images



Western blot analysis of the lysates from Jurkat cells using OPN3 antibody.



Western blot analysis of lysates from HUVEC and Jurkat cells, using OPN3 Antibody. The lane on the right is blocked with the synthesized peptide.

Storage

-20°C for one year

501 Changsheng S Rd, Nanhu Dist, Jiaxing, Zhejiang, China

Tel: 86 21 31007137 | E-mail: save@bt-laboratory.com | www.bt-laboratory.com