

## Encephalopsin Polyclonal Antibody

### Description

|                                |   |
|--------------------------------|---|
| <b>Product type</b>            | Primary Antibody  |
| <b>Code</b>                    | BT-AP02952  |
| <b>Host</b>                    | Rabbit  |
| <b>Isotype</b>                 | IgG   |
| <b>Size</b>                    | 20ul, 50ul, 100ul   |
| <b>Immunogen</b>               | The antiserum was produced against synthesized peptide derived from human Encephalopsin. AA range:161-210 |
| <b>Mol wt</b>                  | 44873   |
| <b>Species reactivity</b>      | Human, Mouse  |
| <b>Clonality</b>               | Polyclonal  |
| <b>Recommended application</b> | WB, IHC-p, IF, ELISA  |
| <b>Concentration</b>           | 1 mg/ml   |
| <b>Full name</b>               | Encephalopsin Antibody  |
| <b>Synonyms</b>                | OPN3; ECPN; Opsin-3; Encephalopsin; Panopsin  |

**This product is for research use only, not for use in human, therapeutic or diagnostic procedure.**

### Background

Opsins are members of the guanine nucleotide-binding protein (G protein)-coupled receptor superfamily. In addition to the visual opsins, mammals possess several photoreceptive non-visual opsins that are expressed in extraocular tissues. This gene, opsin 3, is strongly expressed in brain and testis and weakly expressed in liver, placenta, heart, lung, skeletal muscle, kidney, and pancreas. OPN3 may also be expressed in the retina. The protein has the canonical features of a photoreceptive opsin protein.

### Recommended Dilution

WB: 1: 500 - 1: 2000

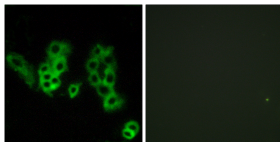
IHC: 1: 100 - 1: 300

IF: 1: 200 - 1: 1000

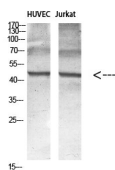
ELISA: 1: 5000

Not yet tested in other applications.

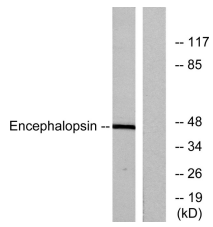
### Images



Immunofluorescence analysis of MCF7 cells, using Encephalopsin Antibody. The picture on the right is blocked with the synthesized peptide.



Western blot analysis of various cell Lysate, antibody was diluted at 1:1000. Secondary antibody was diluted at 1:20000



Western blot analysis of lysates from mouse brain, using Encephalopsin Antibody. The lane on the right is blocked with the synthesized peptide.

### Storage

-20°C for one year

501 Changsheng S Rd, Nanhu Dist, Jiaxing, Zhejiang, China

Tel: 86 21 31007137 | E-mail: [save@bt-laboratory.com](mailto:save@bt-laboratory.com) | [www.bt-laboratory.com](http://www.bt-laboratory.com)