

## Endo G-L1 Polyclonal Antibody

### Description

<b>Product type</b>	Primary Antibody
<b>Code</b>	BT-AP02954
<b>Host</b>	Rabbit
<b>Isotype</b>	IgG
<b>Size</b>	20ul, 50ul, 100ul
<b>Immunogen</b>	The antiserum was produced against synthesized peptide derived from human ENDOGL1. AA range:171-220
<b>Mol wt</b>	41127
<b>Species reactivity</b>	Human
<b>Clonality</b>	Polyclonal
<b>Recommended application</b>	WB, ELISA
<b>Concentration</b>	1 mg/ml
<b>Full name</b>	Endo G-L1 Antibody
<b>Synonyms</b>	EXOG; ENDOGL1; ENDOGL2; ENGL; Nuclease EXOG; mitochondrial; Endonuclease G-like 1; Endo G-like 1

This product is for research use only, not for use in human, therapeutic or diagnostic procedure.

### Background

EXOG encodes an endo/exonuclease with 5'-3' exonuclease activity. The encoded enzyme (endo/exonuclease (5'-3')), endonuclease G-like) catalyzes the hydrolysis of ester linkages at the 5' end of a nucleic acid chain. This enzyme is localized to the mitochondria and may play a role in programmed cell death. Alternatively spliced transcript variants have been described. A pseudogene exists on chromosome 18.

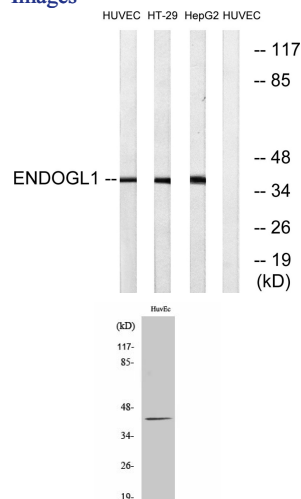
### Recommended Dilution

WB: 1: 500 - 1: 2000

ELISA: 1: 40000

Not yet tested in other applications.

### Images



Western blot analysis of lysates from HUVEC, HT-29, and HepG2 cells, using ENDOGL1 Antibody. The lane on the right is blocked with the synthesized peptide.

Western Blot analysis of various cells using Endo G-L1 Polyclonal Antibody

## Storage

-20°C for one year

501 Changsheng S Rd, Nanhu Dist, Jiaxing, Zhejiang, China

Tel: 86 21 31007137 | E-mail: [save@bt-laboratory.com](mailto:save@bt-laboratory.com) | [www.bt-laboratory.com](http://www.bt-laboratory.com)