

Endo180 Polyclonal Antibody

Description

Product type	Primary Antibody
Code	BT-AP02955
Host	Rabbit
Isotype	IgG
Size	20ul, 50ul, 100ul
Immunogen	The antiserum was produced against synthesized peptide derived from human MRC2. AA range:121-170
Mol wt	166655
Species reactivity	Human, Mouse, Rat
Clonality	Polyclonal
Recommended application	WB, IHC-p, IF, ELISA
Concentration	1 mg/ml
Full name	Endo180 Antibody
Synonyms	MRC2; CLEC13E; ENDO180; KIAA0709; UPARAP; C-type mannose receptor 2; C-type lectin domain family 13 member E; Endocytic receptor 180; Macrophage mannose receptor 2; Urokinase-type plasminogen activato

This product is for research use only, not for use in human, therapeutic or diagnostic procedure.

Background

MRC2 encodes a member of the mannose receptor family of proteins that contain a fibronectin type II domain and multiple C-type lectin-like domains. Mannose receptor C type 2 plays a role in extracellular matrix remodeling by mediating the internalization and lysosomal degradation of collagen ligands. Expression of this gene may play a role in the tumorigenesis and metastasis of several malignancies including breast cancer, gliomas and metastatic bone disease.

Recommended Dilution

WB: 1: 500 - 1: 2000

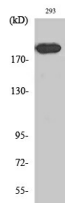
IHC: 1: 100 - 1: 300

IF: 1: 200 - 1: 1000

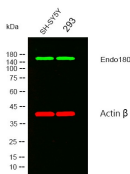
ELISA: 1: 20000

Not yet tested in other applications.

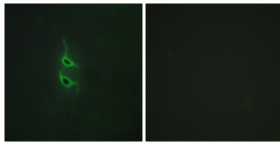
Images



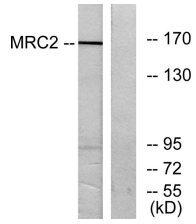
Western Blot analysis of various cells using Endo180 Polyclonal Antibody diluted at 1:1000



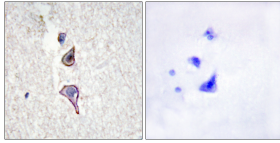
Western blot analysis of lysates from SH-SY5Y,293 cells, (Green) primary antibody was diluted at 1:1000, 4° over night, secondary antibody was diluted at 1:10000, 37° 1hour. (Red) loading control antibody was diluted at 1:5000 as loading control, 4° over night, secondary antibody was diluted at 1:10000, 37° 1hour.



Immunofluorescence analysis of HepG2 cells, using MRC2 Antibody. The picture on the right is blocked with the synthesized peptide.



Western blot analysis of lysates from 293 cells, using MRC2 Antibody. The lane on the right is blocked with the synthesized peptide.



Immunohistochemistry analysis of paraffin-embedded human brain tissue, using MRC2 Antibody. The picture on the right is blocked with the synthesized peptide.

Storage

-20°C for one year

501 Changsheng S Rd, Nanhu Dist, Jiaxing, Zhejiang, China

Tel: 86 21 31007137 | E-mail: save@bt-laboratory.com | www.bt-laboratory.com