

Endomucin Polyclonal Antibody

Description

Product type	Primary Antibody
Code	BT-AP02959
Host	Rabbit
Isotype	IgG
Size	20ul, 50ul, 100ul
Immunogen	The antiserum was produced against synthesized peptide derived from human Mucin-14. AA range:201-250
Mol wt	27452
Species reactivity	Human, Mouse, Rat
Clonality	Polyclonal
Recommended application	IF, ELISA
Concentration	1 mg/ml
Full name	Endomucin Antibody
Synonyms	EMCN; EMCN2; MUC14; Endomucin; Endomucin-2; Gastric cancer antigen Ga34; Mucin-14; MUC-14

This product is for research use only, not for use in human, therapeutic or diagnostic procedure.

Background

EMCN (endomucin) is a mucin-like sialoglycoprotein that interferes with the assembly of focal adhesion complexes and inhibits interaction between cells and the extracellular matrix.

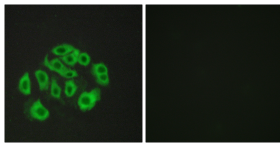
Recommended Dilution

IF: 1: 200 - 1: 1000

ELISA: 1: 5000

Not yet tested in other applications.

Images



Immunofluorescence analysis of HepG2 cells, using Mucin-14 Antibody. The picture on the right is blocked with the synthesized peptide.

Storage

-20°C for one year

501 Changsheng S Rd, Nanhu Dist, Jiaxing, Zhejiang, China

Tel: 86 21 31007137 | E-mail: save@bt-laboratory.com | www.bt-laboratory.com