

Endophilin I Polyclonal Antibody

Description

Product type	Primary Antibody
Code	BT-AP02961
Host	Rabbit
Isotype	IgG
Size	20ul, 50ul, 100ul
Immunogen	Synthesized peptide derived from Endophilin I . at AA range: 30-110
Mol wt	39962
Species reactivity	Human, Mouse, Rat
Clonality	Polyclonal
Recommended application	WB, ELISA
Concentration	1 mg/ml
Full name	Endophilin I Antibody
Synonyms	SH3GL2; CNSA2; SH3D2A; Endophilin-A1; EEN-B1; Endophilin-1; SH3 domain protein 2A; SH3 domain-containing GRB2-like protein 2

This product is for research use only, not for use in human, therapeutic or diagnostic procedure.

Background

The endophilins comprise a family of three SH3 domain-containing proteins designated Endophilin I, II and III, or alternatively known as SH3P4, SH3P8 and SH3P13, respectively. These proteins associate with Amphiphysin, Synaptojanin and Dynamin and are implicated in presynaptic vesicle trafficking at nerve terminals. The expression patterns of the endophilins are consistent with their cellular functions at the neuronal synapse, as Endophilin I is expressed only in the brain. Both Endophilin II and Endophilin III are detected in a variety of tissues. Endophilin I is also implicated in modulating G protein-coupled receptor signaling by functioning as an adapter protein and directing 1 adrenergic receptors to the endocytic machinery.

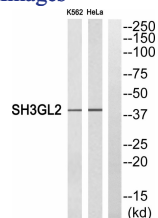
Recommended Dilution

WB: 1: 500 - 1: 2000

ELISA: 1: 10000

Not yet tested in other applications.

Images



Western blot analysis of SH3GL2 Antibody. The lane on the right is blocked with the SH3GL2 peptide.

Storage

-20°C for one year