

ENX-2 Polyclonal Antibody

Description

Product type	Primary Antibody
Code	BT-AP02971
Host	Rabbit
Isotype	IgG
Size	20ul, 50ul, 100ul
Immunogen	The antiserum was produced against synthesized peptide derived from human EZH1. AA range:171-220
Mol wt	85271
Species reactivity	Human, Mouse, Monkey
Clonality	Polyclonal
Recommended application	WB, IHC-p, IF, ELISA
Concentration	1 mg/ml
Full name	ENX-2 Antibody
Synonyms	EZH1; KIAA0388; Histone-lysine N-methyltransferase EZH1; ENX-2; Enhancer of zeste homolog 1

This product is for research use only, not for use in human, therapeutic or diagnostic procedure.

Background

EZH1 is a component of a noncanonical Polycomb repressive complex-2 (PRC2) that mediates methylation of histone H3 (see MIM 602812) lys27 (H3K27) and functions in the maintenance of embryonic stem cell pluripotency and plasticity (Shen et al., 2008 [PubMed 19026780]).

Recommended Dilution

WB: 1: 500 - 1: 2000

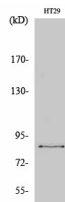
IHC: 1: 100 - 1: 300

IF: 1: 200 - 1: 1000

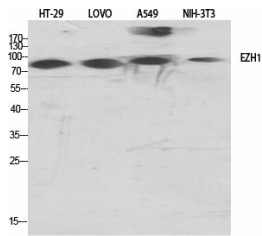
ELISA: 1: 40000

Not yet tested in other applications.

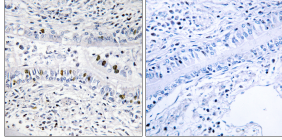
Images



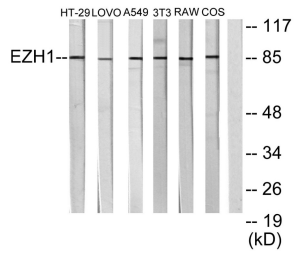
Western Blot analysis of COS7 cells using ENX-2 Polyclonal Antibody cells nucleus.



Western Blot analysis of various cells using ENX-2 Polyclonal Antibody cells nucleus.



Immunohistochemistry analysis of paraffin-embedded human lung carcinoma tissue, using EZH1 Antibody. The picture on the right is blocked with the synthesized peptide.



Western blot analysis of lysates from HT-29, LOVO, A549, NIH/3T3, RAW264.7, and COS7 cells, using EZH1 Antibody. The lane on the right is blocked with the synthesized peptide.

Storage

-20°C for one year

501 Changsheng S Rd, Nanhui Dist, Jiaying, Zhejiang, China

Tel: 86 21 31007137 | E-mail: save@bt-laboratory.com | www.bt-laboratory.com