

## EOMES Polyclonal Antibody

### Description

<b>Product type</b>	Primary Antibody
<b>Code</b>	BT-AP02972
<b>Host</b>	Rabbit
<b>Isotype</b>	IgG
<b>Size</b>	20ul, 50ul, 100ul
<b>Immunogen</b>	The antiserum was produced against synthesized peptide derived from human EOMES. AA range:59-108
<b>Mol wt</b>	72732
<b>Species reactivity</b>	Human, Mouse
<b>Clonality</b>	Polyclonal
<b>Recommended application</b>	WB, ELISA
<b>Concentration</b>	1 mg/ml
<b>Full name</b>	EOMES Antibody
<b>Synonyms</b>	EOMES; TBR2; Eomesodermin homolog; T-box brain protein 2; T-brain-2; TBR-2

**This product is for research use only, not for use in human, therapeutic or diagnostic procedure.**

### Background

EOMES belongs to the TBR1 (T-box brain protein 1) sub-family of T-box genes that share the common DNA-binding T-box domain. The encoded protein (eomesodermin) is a transcription factor which is crucial for embryonic development of mesoderm and the central nervous system in vertebrates. The protein may also be necessary for the differentiation of effector CD8+ T cells which are involved in defense against viral infections. A similar gene disrupted in mice is shown to be essential during trophoblast development and gastrulation. Alternative splicing results in multiple transcript variants.

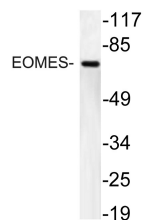
### Recommended Dilution

WB: 1: 500 - 1: 2000

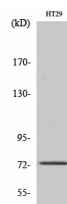
ELISA: 1: 10000

Not yet tested in other applications.

### Images



Western blot analysis of lysate from HT29 cells, using EOMES antibody.



Western Blot analysis of various cells using EOMES Polyclonal Antibody cells nucleus.

## Storage

-20°C for one year

501 Changsheng S Rd, Nanhu Dist, Jiaxing, Zhejiang, China

Tel: 86 21 31007137 | E-mail: [save@bt-laboratory.com](mailto:save@bt-laboratory.com) | [www.bt-laboratory.com](http://www.bt-laboratory.com)