

Eotaxin Polyclonal Antibody

Description

Product type	Primary Antibody
Code	BT-AP02974
Host	Rabbit
Isotype	IgG
Size	20ul, 50ul, 100ul
Immunogen	The antiserum was produced against synthesized peptide derived from the Internal region of human CCL11. AA range:41-90
Mol wt	10732
Species reactivity	Human, Mouse, Rat
Clonality	Polyclonal
Recommended application	WB, ELISA
Concentration	1 mg/ml
Full name	Eotaxin Antibody
Synonyms	CCL11; SCYA11; Eotaxin; C-C motif chemokine 11; Eosinophil chemotactic protein; Small-inducible cytokine A11

This product is for research use only, not for use in human, therapeutic or diagnostic procedure.

Background

CCL11 is one of several chemokine genes clustered on the q-arm of chromosome 17. Chemokines form a superfamily of secreted proteins involved in immunoregulatory and inflammatory processes. The superfamily is divided into four subfamilies based on the arrangement of the N-terminal cysteine residues of the mature peptide. This chemokine, a member of the CC subfamily, displays chemotactic activity for eosinophils, but not mononuclear cells or neutrophils. This eosinophil-specific chemokine is thought to be involved in eosinophilic inflammatory diseases such as atopic dermatitis, allergic rhinitis, asthma and parasitic infections.

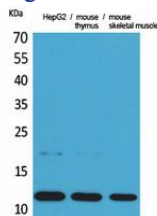
Recommended Dilution

WB: 1: 500 - 1: 2000

ELISA: 1: 20000

Not yet tested in other applications.

Images



Western Blot analysis of HepG2, mouse thymus, mouse skeletal muscle cells using Eotaxin Polyclonal Antibody.

Secondary antibody was diluted at 1:20000

Storage

-20°C for one year