

EP1 Polyclonal Antibody

Description

Product type	Primary Antibody
Code	BT-AP02977
Host	Rabbit
Isotype	IgG
Size	20ul, 50ul, 100ul
Immunogen	The antiserum was produced against synthesized peptide derived from the Internal region of human PTGER1. AA range:191-240
Mol wt	41801
Species reactivity	Human
Clonality	Polyclonal
Recommended application	WB, ELISA
Concentration	1 mg/ml
Full name	EP1 Antibody
Synonyms	PTGER1; Prostaglandin E2 receptor EP1 subtype; PGE receptor EP1 subtype; PGE2 receptor EP1 subtype; Prostanoid EP1 receptor

This product is for research use only, not for use in human, therapeutic or diagnostic procedure.

Background

Prostaglandin E2 receptor EP1 subtype encoded by PTGER1 is a member of the G protein-coupled receptor family. This protein is one of four receptors identified for prostaglandin E2 (PGE2). Through a phosphatidylinositol-calcium second messenger system, G-Q proteins mediate this receptor's activity. Knockout studies in mice suggested a role of this receptor in mediating algesia and in regulation of blood pressure. Studies in mice also suggested that this gene may mediate adrenocorticotrophic hormone response to bacterial endotoxin.

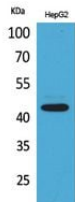
Recommended Dilution

WB: 1: 500 - 1: 2000

ELISA: 1: 20000

Not yet tested in other applications.

Images



Western Blot analysis of HepG2 cells using EP1 Polyclonal Antibody. Secondary antibody was diluted at 1:20000

Storage

-20°C for one year