

EP3 Polyclonal Antibody

Description

Product type	Primary Antibody
Code	BT-AP02982
Host	Rabbit
Isotype	IgG
Size	20ul, 50ul, 100ul
Immunogen	The antiserum was produced against synthesized peptide derived from human PTGER3. AA range:16-65
Mol wt	43310
Species reactivity	Human
Clonality	Polyclonal
Recommended application	WB, IF, ELISA
Concentration	1 mg/ml
Full name	EP3 Antibody
Synonyms	PTGER3; Prostaglandin E2 receptor EP3 subtype; PGE receptor EP3 subtype; PGE2 receptor EP3 subtype; PGE2-R; Prostanoid EP3 receptor

This product is for research use only, not for use in human, therapeutic or diagnostic procedure.

Background

Prostaglandin E receptor 3 encoded by PTGER3 is a member of the G-protein coupled receptor family. This protein is one of four receptors identified for prostaglandin E2 (PGE2). This receptor may have many biological functions, which involve digestion, nervous system, kidney reabsorption, and uterine contraction activities. Studies of the mouse counterpart suggest that this receptor may also mediate adrenocorticotrophic hormone response as well as fever generation in response to exogenous and endogenous stimuli. Multiple transcript variants encoding different isoforms have been found for PTGER3.

Recommended Dilution

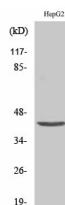
WB: 1: 500 - 1: 2000

IF: 1: 200 - 1: 1000

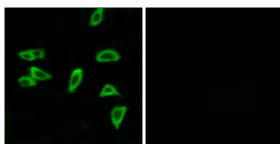
ELISA: 1: 10000

Not yet tested in other applications.

Images



Western Blot analysis of various cells using EP3 Polyclonal Antibody



Immunofluorescence analysis of LOVO cells, using PTGER3 Antibody. The picture on the right is blocked with the synthesized peptide.

Storage

-20°C for one year

501 Changsheng S Rd, Nanhu Dist, Jiaxing, Zhejiang, China

Tel: 86 21 31007137 | E-mail: save@bt-laboratory.com | www.bt-laboratory.com