

Epac Polyclonal Antibody

Description

Product type	Primary Antibody
Code	BT-AP02984
Host	Rabbit
Isotype	IgG
Size	20ul, 50ul, 100ul
Immunogen	The antiserum was produced against synthesized peptide derived from human RAPGEF3. AA range:712-761
Mol wt	99353
Species reactivity	Human, Mouse, Rat
Clonality	Polyclonal
Recommended application	WB, ELISA
Concentration	1 mg/ml
Full name	Epac Antibody
Synonyms	RAPGEF3; CGEF1; EPAC; EPAC1; Rap guanine nucleotide exchange factor 3; Exchange factor directly activated by cAMP 1; Exchange protein directly activated by cAMP 1; EPAC 1; Rap1 guanine-nucleotide-exch

This product is for research use only, not for use in human, therapeutic or diagnostic procedure.

Background

RAPGEF3 (Rap Guanine Nucleotide Exchange Factor 3) is a Protein Coding gene. Among its related pathways are Platelet activation, signaling and aggregation and Signaling by GPCR. GO annotations related to this gene include guanyl-nucleotide exchange factor activity and cAMP-dependent protein kinase regulator activity. An important paralog of this gene is RASGEF1A. uanine nucleotide exchange factor (GEF) for RAP1A and RAP2A small GTPases that is activated by binding cAMP. Through simultaneous binding of PDE3B to RAPGEF3 and PIK3R6 is assembled in a signaling complex in which it activates the PI3K gamma complex and which is involved in angiogenesis. Plays a role in the modulation of the cAMP-induced dynamic control of endothelial barrier function through a pathway that is independent on Rho-mediated signaling. Required for the actin rearrangement at cell-cell junctions, such as stress fibers and junctional actin. TPases are a group of enzymes that catalyze hydrolysis of the gamma phosphate bond in guanine triphosphate (GTP) to form guanine diphosphate (GDP). Mg²⁺ ions are essential for catalytic activity. GTPases, often coupled to G proteins, are essential in signal transduction.

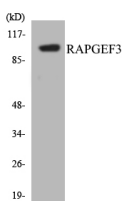
Recommended Dilution

WB: 1: 500 - 1: 2000

ELISA: 1: 40000

Not yet tested in other applications.

Images



Western blot analysis of the lysates from HeLa cells using RAPGEF3 antibody.

Storage

-20°C for one year

501 Changsheng S Rd, Nanhu Dist, Jiaxing, Zhejiang, China

Tel: 86 21 31007137 | E-mail: save@bt-laboratory.com | www.bt-laboratory.com