

EP-CAM Polyclonal Antibody

Description

Product type	Primary Antibody
Code	BT-AP02987
Host	Rabbit
Isotype	IgG
Size	20ul, 50ul, 100ul
Immunogen	The antiserum was produced against synthesized peptide derived from human TACD1. AA range:116-165
Mol wt	34932
Species reactivity	Human
Clonality	Polyclonal
Recommended application	WB, IF, ELISA
Concentration	1 mg/ml
Full name	EP-CAM Antibody
Synonyms	EPCAM; GA733-2; M1S2; M4S1; MIC18; TACSTD1; TROP1; Epithelial cell adhesion molecule; Ep-CAM; Adenocarcinoma-associated antigen; Cell surface glycoprotein Trop-1; Epithelial cell surface antigen; Epit

This product is for research use only, not for use in human, therapeutic or diagnostic procedure.

Background

EPCAM encodes a carcinoma-associated antigen and is a member of a family that includes at least two type I membrane proteins. This antigen is expressed on most normal epithelial cells and gastrointestinal carcinomas and functions as a homotypic calcium-independent cell adhesion molecule. The antigen is being used as a target for immunotherapy treatment of human carcinomas. Mutations in EPCAM result in congenital tufting enteropathy.

Recommended Dilution

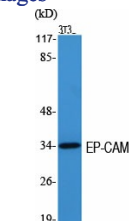
WB: 1: 500 - 1: 2000

IF: 1: 200 - 1: 1000

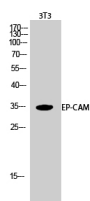
ELISA: 1: 5000

Not yet tested in other applications.

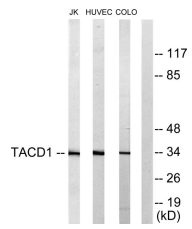
Images



Western Blot analysis of various cells using EP-CAM Polyclonal Antibody diluted at 1:2000



Western Blot analysis of 3T3 cells using EP-CAM Polyclonal Antibody diluted at 1:2000



Western blot analysis of lysates from Jurkat, HUVEC, and COLO205 cells, using TACD1 Antibody. The lane on the right is blocked with the synthesized peptide.

Storage

-20°C for one year

501 Changsheng S Rd, Nanhu Dist, Jiaxing, Zhejiang, China

Tel: 86 21 31007137 | E-mail: save@bt-laboratory.com | www.bt-laboratory.com