

Ephrin-A1 Polyclonal Antibody

Description

Product type	Primary Antibody
Code	BT-AP03013
Host	Rabbit
Isotype	IgG
Size	20ul, 50ul, 100ul
Immunogen	The antiserum was produced against synthesized peptide derived from human EFNA1. AA range:66-115
Mol wt	23787
Species reactivity	Human, Mouse, Rat
Clonality	Polyclonal
Recommended application	WB, IHC-p, IF, ELISA
Concentration	1 mg/ml
Full name	Ephrin-A1 Antibody
Synonyms	EFNA1; EPLG1; LERK1; TNFAIP4; Ephrin-A1; EPH-related receptor tyrosine kinase ligand 1; LERK-1; Immediate early response protein B61; Tumor necrosis factor alpha-induced protein 4; TNF alpha-induced p

This product is for research use only, not for use in human, therapeutic or diagnostic procedure.

Background

EFNA1 encodes a member of the ephrin (EPH) family. The ephrins and EPH-related receptors comprise the largest subfamily of receptor protein-tyrosine kinases and have been implicated in mediating developmental events, especially in the nervous system and in erythropoiesis. Based on their structures and sequence relationships, ephrins are divided into the ephrin-A (EFNA) class, which are anchored to the membrane by a glycosylphosphatidylinositol linkage, and the ephrin-B (EFNB) class, which are transmembrane proteins. This gene encodes an EFNA class ephrin which binds to the EPHA2, EPHA4, EPHA5, EPHA6, and EPHA7 receptors. Two transcript variants that encode different isoforms were identified through sequence analysis.

Recommended Dilution

WB: 1: 500 - 1: 2000

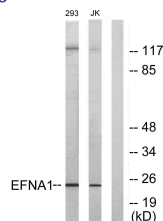
IHC: 1: 100 - 1: 300

IF: 1: 200 - 1: 1000

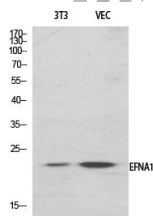
ELISA: 1: 10000

Not yet tested in other applications.

Images



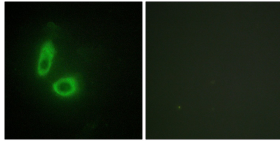
Western blot analysis of lysates from 293 and Jurkat cells, using EFNA1 Antibody. The lane on the right is blocked with the synthesized peptide.



Western Blot analysis of various cells using Ephrin-A1 Polyclonal Antibody diluted at 1:2000



Western Blot analysis of Jurkat cells using Ephrin-A1 Polyclonal Antibody diluted at 1:2000



Immunofluorescence analysis of HeLa cells, using EFNA1 Antibody. The picture on the right is blocked with the synthesized peptide.

Storage

-20°C for one year

501 Changsheng S Rd, Nanhu Dist, Jiaxing, Zhejiang, China

Tel: 86 21 31007137 | E-mail: save@bt-laboratory.com | www.bt-laboratory.com