

Ephrin-A4 Polyclonal Antibody

Description

Product type	Primary Antibody
Code	BT-AP03016
Host	Rabbit
Isotype	IgG
Size	20ul, 50ul, 100ul
Immunogen	The antiserum was produced against synthesized peptide derived from human EFNA4. AA range:131-180
Mol wt	22386
Species reactivity	Human, Mouse
Clonality	Polyclonal
Recommended application	WB, ELISA
Concentration	1 mg/ml
Full name	Ephrin-A4 Antibody
Synonyms	EFNA4; EPLG4; LERK4; Ephrin-A4; EPH-related receptor tyrosine kinase ligand 4; LERK-4

This product is for research use only, not for use in human, therapeutic or diagnostic procedure.

Background

EFNA4 encodes a member of the ephrin (EPH) family. The ephrins and EPH-related receptors comprise the largest subfamily of receptor protein-tyrosine kinases and have been implicated in mediating developmental events, especially in the nervous system and in erythropoiesis. Based on their structures and sequence relationships, ephrins are divided into the ephrin-A (EFNA) class, which are anchored to the membrane by a glycosylphosphatidylinositol linkage, and the ephrin-B (EFNB) class, which are transmembrane proteins. This gene encodes an EFNA class ephrin. Three transcript variants that encode distinct proteins have been identified.

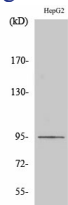
Recommended Dilution

WB: 1: 500 - 1: 2000

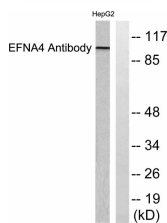
ELISA: 1: 40000

Not yet tested in other applications.

Images



Western Blot analysis of various cells using Ephrin-A4 Polyclonal Antibody diluted at 1:500



Western blot analysis of lysates from HepG2 cells, using EFNA4 Antibody. The lane on the right is blocked with the synthesized peptide.

Storage

-20°C for one year

501 Changsheng S Rd, Nanhu Dist, Jiaxing, Zhejiang, China

Tel: 86 21 31007137 | E-mail: save@bt-laboratory.com | www.bt-laboratory.com