

Ephrin-B1/2 Polyclonal Antibody

Description

Product type	Primary Antibody
Code	BT-AP03020
Host	Rabbit
Isotype	IgG
Size	20ul, 50ul, 100ul
Immunogen	The antiserum was produced against synthesized peptide derived from human EFNB1/2. AA range:284-333
Mol wt	36923
Species reactivity	Human, Mouse, Rat
Clonality	Polyclonal
Recommended application	WB, IHC-p, ELISA
Concentration	1 mg/ml
Full name	Ephrin-B1/2 Antibody
Synonyms	EFNB1; EFL3; EPLG2; LERK2; Ephrin-B1; EFL-3; ELK ligand; ELK-L; EPH-related receptor tyrosine kinase ligand 2; LERK-2; EFNB2; EPLG5; HTKL; LERK5; Ephrin-B2; EPH-related receptor tyrosine kinase ligand

This product is for research use only, not for use in human, therapeutic or diagnostic procedure.

Background

Ephrin B1 encoded by EFNB1 is a type I membrane protein and a ligand of Eph-related receptor tyrosine kinases. It may play a role in cell adhesion and function in the development or maintenance of the nervous system.

Recommended Dilution

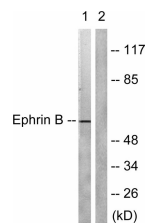
WB: 1: 500 - 1: 2000

IHC: 1: 100 - 1: 300

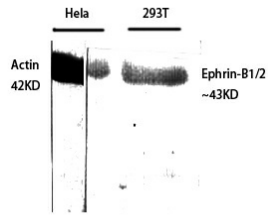
ELISA: 1: 40000

Not yet tested in other applications.

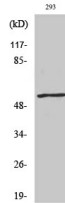
Images



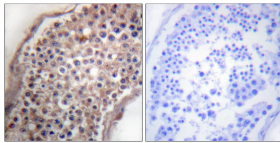
Western blot analysis of lysates from 293 cells, treated with EGF 200ng/ml 5', using EFNB1/2 Antibody. The lane on the right is blocked with the synthesized peptide.



Western Blot analysis of various cells using Ephrin-B1/2 Polyclonal Antibody diluted at 1:500



Western Blot analysis of 293 cells using Ephrin-B1/2 Polyclonal Antibody diluted at 1:500



Immunohistochemistry analysis of paraffin-embedded human testis tissue, using EFNB1/2 Antibody.
The picture on the right is blocked with the synthesized peptide.

Storage

-20°C for one year

501 Changsheng S Rd, Nanhu Dist, Jiaxing, Zhejiang, China

Tel: 86 21 31007137 | E-mail: save@bt-laboratory.com | www.bt-laboratory.com