

Eps8L3 Polyclonal Antibody

Description

Product type	Primary Antibody
Code	BT-AP03029
Host	Rabbit
Isotype	IgG
Size	20ul, 50ul, 100ul
Immunogen	The antiserum was produced against synthesized peptide derived from human EPS8L3. AA range:401-450
Mol wt	66861
Species reactivity	Human
Clonality	Polyclonal
Recommended application	IHC-p, IF, ELISA
Concentration	1 mg/ml
Full name	Eps8L3 Antibody
Synonyms	EPS8L3; EPS8R3; Epidermal growth factor receptor kinase substrate 8-like protein 3; EPS8-like protein 3; Epidermal growth factor receptor pathway substrate 8-related protein 3; EPS8-related protein 3

This product is for research use only, not for use in human, therapeutic or diagnostic procedure.

Background

EPS8L3 (EPS8 like 3) encodes a protein that is related to epidermal growth factor receptor pathway substrate 8 (EPS8), a substrate for the epidermal growth factor receptor. The function of this protein is unknown. Alternatively spliced transcript variants encoding different isoforms exist.

Recommended Dilution

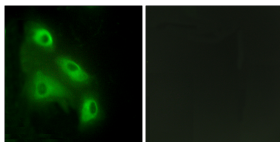
IHC: 1: 100 - 1: 300

IF: 1: 200 - 1: 1000

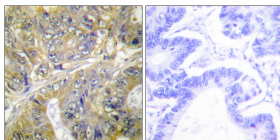
ELISA: 1: 10000

Not yet tested in other applications.

Images



Immunofluorescence analysis of HeLa cells, using EPS8L3 Antibody. The picture on the right is blocked with the synthesized peptide.



Immunohistochemistry analysis of paraffin-embedded human colon carcinoma tissue, using EPS8L3 Antibody. The picture on the right is blocked with the synthesized peptide.

Storage

-20°C for one year