

Epsin 1 Polyclonal Antibody

Description

Product type	Primary Antibody
Code	BT-AP03030
Host	Rabbit
Isotype	IgG
Size	20ul, 50ul, 100ul
Immunogen	Synthesized peptide derived from Epsin 1 . at AA range: 140-220
Mol wt	57575
Species reactivity	Human, Mouse, Rat
Clonality	Polyclonal
Recommended application	WB, ELISA
Concentration	1 mg/ml
Full name	Epsin 1 Antibody
Synonyms	EPN1; Epsin-1; EH domain-binding mitotic phosphoprotein; EPS-15-interacting protein 1

This product is for research use only, not for use in human, therapeutic or diagnostic procedure.

Background

EPN1 encodes a member of the epsin protein family. The encoded protein (epsin 1) binds clathrin and is involved in the endocytosis of clathrin-coated vesicles. Loss of function of EPN1 is associated with reduced tumor growth and progression in certain cancer types.

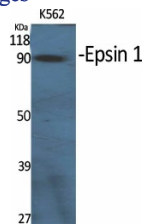
Recommended Dilution

WB: 1: 500 - 1: 2000

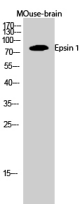
ELISA: 1: 40000

Not yet tested in other applications.

Images



Western Blot analysis of various cells using Epsin 1 Polyclonal Antibody diluted at 1:1000



Western Blot analysis of MOuse-brain cells using Epsin 1 Polyclonal Antibody diluted at 1:1000

Storage

-20°C for one year