

Epsin 2 Polyclonal Antibody

Description

Product type	Primary Antibody
Code	BT-AP03031
Host	Rabbit
Isotype	IgG
Size	20ul, 50ul, 100ul
Immunogen	The antiserum was produced against synthesized peptide derived from human EPN2. AA range:271-320
Mol wt	68554
Species reactivity	Human, Mouse, Rat
Clonality	Polyclonal
Recommended application	WB, IHC-p, ELISA
Concentration	1 mg/ml
Full name	Epsin 2 Antibody
Synonyms	EPN2; KIAA1065; Epsin-2; EPS-15-interacting protein 2

This product is for research use only, not for use in human, therapeutic or diagnostic procedure.

Background

EPN2 encodes a protein which interacts with clathrin and adaptor-related protein complex 2, alpha 1 subunit. Epsin 2 is found in a brain-derived clathrin-coated vesicle fraction and localizes to the peri-Golgi region and the cell periphery. The protein is thought to be involved in clathrin-mediated endocytosis. Alternate splicing of EPN2 results in multiple transcript variants encoding different isoforms

Recommended Dilution

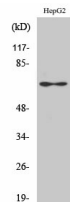
WB: 1: 500 - 1: 2000

IHC: 1: 100 - 1: 300

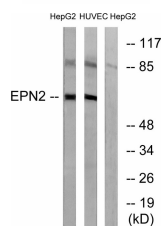
ELISA: 1: 20000

Not yet tested in other applications.

Images



Western Blot analysis of various cells using Epsin 2 Polyclonal Antibody diluted at 1:1000



Western blot analysis of lysates from HepG2 and HUVEC cells, using EPN2 Antibody. The lane on the right is blocked with the synthesized peptide.

Storage

-20°C for one year

501 Changsheng S Rd, Nanhu Dist, Jiaxing, Zhejiang, China

Tel: 86 21 31007137 | E-mail: save@bt-laboratory.com | www.bt-laboratory.com