

Epsin 3 Polyclonal Antibody

Description

Product type	Primary Antibody
Code	BT-AP03032
Host	Rabbit
Isotype	IgG
Size	20ul, 50ul, 100ul
Immunogen	The antiserum was produced against synthesized peptide derived from human EPN3. AA range:401-450
Mol wt	68222
Species reactivity	Human
Clonality	Polyclonal
Recommended application	WB, IHC-p, ELISA
Concentration	1 mg/ml
Full name	Epsin 3 Antibody
Synonyms	EPN3; Epsin-3; EPS-15-interacting protein 3

This product is for research use only, not for use in human, therapeutic or diagnostic procedure.

Background

EPN3 (Epsin 3) is a Protein Coding gene. Among its related pathways are Endocytosis and Notch Signaling Pathways. GO annotations related to this gene include lipid binding and EH domain binding. An important paralog of this gene is ENTHD1.

Recommended Dilution

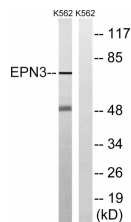
WB: 1: 500 - 1: 2000

IHC: 1: 100 - 1: 300

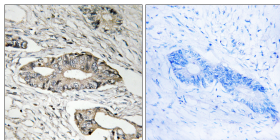
ELISA: 1: 10000

Not yet tested in other applications.

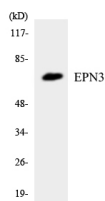
Images



Western blot analysis of lysates from K562 cells, using EPN3 Antibody. The lane on the right is blocked with the synthesized peptide.



Immunohistochemistry analysis of paraffin-embedded human colon carcinoma tissue, using EPN3 Antibody. The picture on the right is blocked with the synthesized peptide.



Western blot analysis of the lysates from COLO205 cells using EPN3 antibody.

Storage

-20°C for one year

501 Changsheng S Rd, Nanhu Dist, Jiaxing, Zhejiang, China

Tel: 86 21 31007137 | E-mail: save@bt-laboratory.com | www.bt-laboratory.com