

ER81 Polyclonal Antibody

Description

Product type	Primary Antibody
Code	BT-AP03034
Host	Rabbit
Isotype	IgG
Size	20ul, 50ul, 100ul
Immunogen	The antiserum was produced against synthesized peptide derived from human ER81. AA range:10-59
Mol wt	55131
Species reactivity	Human, Mouse
Clonality	Polyclonal
Recommended application	WB, IHC-p, ELISA
Concentration	1 mg/ml
Full name	ER81 Antibody
Synonyms	ETV1; ER81; ETS translocation variant 1; Ets-related protein 81

This product is for research use only, not for use in human, therapeutic or diagnostic procedure.

Background

ETV1 encodes a member of the ETS (E twenty-six) family of transcription factors. The ETS proteins regulate many target genes that modulate biological processes like cell growth, angiogenesis, migration, proliferation and differentiation. All ETS proteins contain an ETS DNA-binding domain that binds to DNA sequences containing the consensus 5'-CGGA[AT]-3'. The protein encoded by this gene contains a conserved short acidic transactivation domain (TAD) in the N-terminal region, in addition to the ETS DNA-binding domain in the C-terminal region. This gene is involved in chromosomal translocations, which result in multiple fusion proteins including EWS-ETV1 in Ewing sarcoma and at least 10 ETV1 partners (see PMID: 19657377, Table 1) in prostate cancer. In addition to chromosomal rearrangement, this gene is overexpressed in prostate cancer, melanoma and gastrointestinal stromal tumor. Multiple alternatively spliced transcript variants encoding different isoforms have been identified.

Recommended Dilution

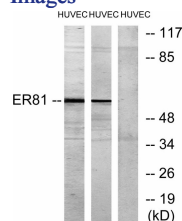
WB: 1: 500 - 1: 2000

IHC: 1: 100 - 1: 300

ELISA: 1: 10000

Not yet tested in other applications.

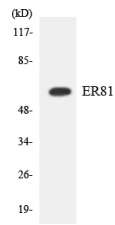
Images



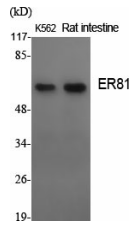
Western blot analysis of lysates from HUVEC cells, treated with PMA 125ng/ml 30', using ER81 Antibody. The lane on the right is blocked with the synthesized peptide.



Western Blot analysis of HuvEc cells using ER81 Polyclonal Antibody cells nucleus.



Western blot analysis of the lysates from HT-29 cells using ER81 antibody.



Western Blot analysis of various cells using ER81 Polyclonal Antibody cells nucleus.

Storage

-20°C for one year

501 Changsheng S Rd, Nanhu Dist, Jiaxing, Zhejiang, China

Tel: 86 21 31007137 | E-mail: save@bt-laboratory.com | www.bt-laboratory.com