

ERAP1 Polyclonal Antibody

Description

Product type	Primary Antibody
Code	BT-AP03036
Host	Rabbit
Isotype	IgG
Size	20ul, 50ul, 100ul
Immunogen	The antiserum was produced against synthesized peptide derived from human ARTS-1. AA range:441-490
Mol wt	107235
Species reactivity	Human, Mouse, Rat
Clonality	Polyclonal
Recommended application	WB, IHC-p, IF, ELISA
Concentration	1 mg/ml
Full name	ERAP1 Antibody
Synonyms	ERAP1; APPILS; ARTS1; KIAA0525; Endoplasmic reticulum aminopeptidase 1; ARTS-1; Adipocyte-derived leucine aminopeptidase; A-LAP; Aminopeptidase PILS; Puromycin-insensitive leucyl-specific aminopeptida

This product is for research use only, not for use in human, therapeutic or diagnostic procedure.

Background

Endoplasmic reticulum aminopeptidase 1 encoded by ERAP1 is an aminopeptidase involved in trimming HLA class I-binding precursors so that they can be presented on MHC class I molecules. The encoded protein acts as a monomer or as a heterodimer with ERAP2. This protein may also be involved in blood pressure regulation by inactivation of angiotensin II. Three transcript variants encoding two different isoforms have been found for ERAP1.

Recommended Dilution

WB: 1: 500 - 1: 2000

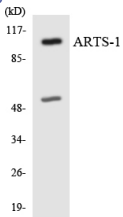
IHC: 1: 100 - 1: 300

IF: 1: 200 - 1: 1000

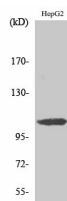
ELISA: 1: 20000

Not yet tested in other applications.

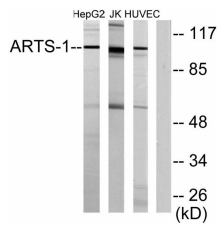
Images



Western blot analysis of the lysates from HepG2 cells using ARTS-1 antibody.



Western Blot analysis of various cells using ERAP1 Polyclonal Antibody diluted at 1:500



Western blot analysis of lysates from HepG2, Jurkat, and HUVEC cells, using ARTS-1 Antibody. The lane on the right is blocked with the synthesized peptide.

Storage

-20°C for one year

501 Changsheng S Rd, Nanhu Dist, Jiaxing, Zhejiang, China

Tel: 86 21 31007137 | E-mail: save@bt-laboratory.com | www.bt-laboratory.com