

ERdj3 Polyclonal Antibody

Description

Product type	Primary Antibody
Code	BT-AP03049
Host	Rabbit
Isotype	IgG
Size	20ul, 50ul, 100ul
Immunogen	The antiserum was produced against synthesized peptide derived from human DNAJB11. AA range:31-80
Mol wt	40514
Species reactivity	Human, Mouse, Rat
Clonality	Polyclonal
Recommended application	WB, IHC-p, ELISA
Concentration	1 mg/ml
Full name	ERdj3 Antibody
Synonyms	DNAJB11; EDJ; ERJ3; HDJ9; PSEC0121; DnaJ homolog subfamily B member 11; APOBEC1-binding protein 2; ABBP-2; DnaJ protein homolog 9; ER-associated DNAJ; ER-associated Hsp40 co-chaperone; ER-associated d

This product is for research use only, not for use in human, therapeutic or diagnostic procedure.

Background

DNAJB11 encodes a soluble glycoprotein of the endoplasmic reticulum (ER) lumen that functions as a co-chaperone of binding immunoglobulin protein, a 70 kilodalton heat shock protein chaperone required for the proper folding and assembly of proteins in the ER. The encoded protein contains a highly conserved J domain of about 70 amino acids with a characteristic His-Pro-Asp (HPD) motif and may regulate the activity of binding immunoglobulin protein by stimulating ATPase activity.

Recommended Dilution

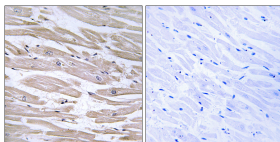
WB: 1: 500 - 1: 2000

IHC: 1: 100 - 1: 300

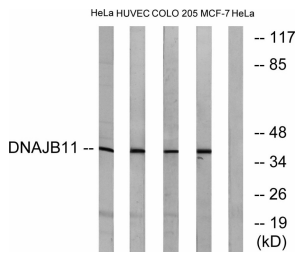
ELISA: 1: 20000

Not yet tested in other applications.

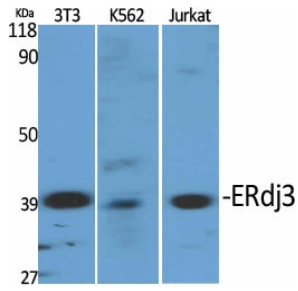
Images



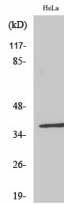
Immunohistochemistry analysis of paraffin-embedded human heart tissue, using DNAJB11 Antibody. The picture on the right is blocked with the synthesized peptide.



Western blot analysis of lysates from HeLa, HUVEC, COLO, and MCF-7 cells, using DNAJB11 Antibody. The lane on the right is blocked with the synthesized peptide.



Western Blot analysis of various cells using ERdj3 Polyclonal Antibody diluted at 1:2000



Western Blot analysis of MCF7 cells using ERdj3 Polyclonal Antibody diluted at 1:2000

Storage

-20°C for one year

501 Changsheng S Rd, Nanhu Dist, Jiaxing, Zhejiang, China

Tel: 86 21 31007137 | E-mail: save@bt-laboratory.com | www.bt-laboratory.com