

ERF Polyclonal Antibody

Description

Product type	Primary Antibody
Code	BT-AP03050
Host	Rabbit
Isotype	IgG
Size	20ul, 50ul, 100ul
Immunogen	The antiserum was produced against synthesized peptide derived from human ERF. AA range:471-520
Mol wt	58703
Species reactivity	Human, Mouse
Clonality	Polyclonal
Recommended application	IHC-p, ELISA
Concentration	1 mg/ml
Full name	ERF Antibody
Synonyms	ERF; ETS domain-containing transcription factor ERF; Ets2 repressor factor; PE-2

This product is for research use only, not for use in human, therapeutic or diagnostic procedure.

Background

ETS2 is a transcription factor and protooncogene involved in development, apoptosis, and the regulation of telomerase. The protein encoded by ERF binds to the ETS2 promoter and is a strong repressor of ETS2 transcription. Several transcript variants encoding two different isoforms have been found for this gene.

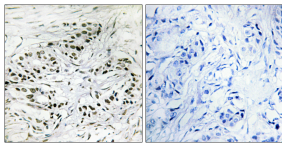
Recommended Dilution

IHC: 1: 100 - 1: 300

ELISA: 1: 40000

Not yet tested in other applications.

Images



Immunohistochemistry analysis of paraffin-embedded human breast carcinoma tissue, using ERF Antibody. The picture on the right is blocked with the synthesized peptide.

Storage

-20°C for one year

501 Changsheng S Rd, Nanhu Dist, Jiaxing, Zhejiang, China

Tel: 86 21 31007137 | E-mail: save@bt-laboratory.com | www.bt-laboratory.com