

ERF Polyclonal Antibody

Description

Product type	Primary Antibody
Code	BT-AP03051
Host	Rabbit
Isotype	IgG
Size	20ul, 50ul, 100ul
Immunogen	The antiserum was produced against synthesized peptide derived from human ERF. AA range:492-541
Mol wt	58703
Species reactivity	Human, Mouse
Clonality	Polyclonal
Recommended application	WB, IHC-p, IF, ELISA
Concentration	1 mg/ml
Full name	ERF Antibody
Synonyms	ERF; ETS domain-containing transcription factor ERF; Ets2 repressor factor; PE-2

This product is for research use only, not for use in human, therapeutic or diagnostic procedure.

Background

ETS2 is a transcription factor and protooncogene involved in development, apoptosis, and the regulation of telomerase. The protein encoded by ERF binds to the ETS2 promoter and is a strong repressor of ETS2 transcription. Several transcript variants encoding two different isoforms have been found for ERF.

Recommended Dilution

WB: 1: 500 - 1: 2000

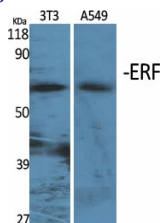
IHC: 1: 100 - 1: 300

IF: 1: 200 - 1: 1000

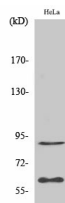
ELISA: 1: 10000

Not yet tested in other applications.

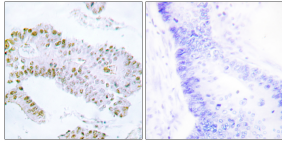
Images



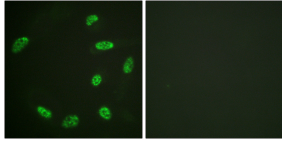
Western Blot analysis of various cells using ERF Polyclonal Antibody cells nucleus.



Western Blot analysis of HepG2 cells using ERF Polyclonal Antibody cells nucleus.



Immunohistochemistry analysis of paraffin-embedded human colon carcinoma tissue, using ERF Antibody. The picture on the right is blocked with the synthesized peptide.



Immunofluorescence analysis of HeLa cells, using ERF Antibody. The picture on the right is blocked with the synthesized peptide.

Storage

-20°C for one year

501 Changsheng S Rd, Nanhu Dist, Jiaxing, Zhejiang, China

Tel: 86 21 31007137 | E-mail: save@bt-laboratory.com | www.bt-laboratory.com