

ERGIC-3 Polyclonal Antibody

Description

Product type	Primary Antibody
Code	BT-AP03053
Host	Rabbit
Isotype	IgG
Size	20ul, 50ul, 100ul
Immunogen	The antiserum was produced against synthesized peptide derived from human ERG13. AA range:321-370
Mol wt	43222
Species reactivity	Human, Mouse
Clonality	Polyclonal
Recommended application	WB, IHC-p, IF, ELISA
Concentration	1 mg/ml
Full name	ERGIC-3 Antibody
Synonyms	ERGIC3; C20orf47; ERV46; SDBCAG84; CGI-54; Endoplasmic reticulum-Golgi intermediate compartment protein 3; Serologically defined breast cancer antigen NY-BR-84

This product is for research use only, not for use in human, therapeutic or diagnostic procedure.

Background

The ERGIC3 protein was also over-expressed in lung cancer tissues and cultured cells, and expression of ERGIC3 was correlated with the differentiated degree and histological type of lung cancer (PMID: 23374247). The up-regulation of ERGIC3 could promote cellular migration and proliferation in vitro. ERGIC3 may play an active role in the development and progression of lung cancer (PMID: 23374247). The MW of this protein is 50 kDa, and this antibody specially recognises the 50 kDa protein.

Recommended Dilution

WB: 1: 500 - 1: 2000

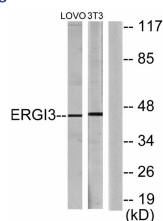
IHC: 1: 100 - 1: 300

IF: 1: 200 - 1: 1000

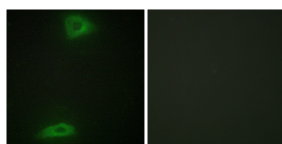
ELISA: 1: 20000

Not yet tested in other applications.

Images



Western blot analysis of lysates from LOVO and NIH/3T3 cells, using ERG13 Antibody. The lane on the right is blocked with the synthesized peptide.



Immunofluorescence analysis of HepG2 cells, using ERG13 Antibody. The picture on the right is blocked with the synthesized peptide.

Storage

-20°C for one year

501 Changsheng S Rd, Nanhu Dist, Jiaxing, Zhejiang, China

Tel: 86 21 31007137 | E-mail: save@bt-laboratory.com | www.bt-laboratory.com