

ERK 1/2 Polyclonal Antibody

Description

Product type	Primary Antibody
Code	BT-AP03059
Host	Rabbit
Isotype	IgG
Size	20ul, 50ul, 100ul
Immunogen	The antiserum was produced against synthesized peptide derived from human p44/42 MAP Kinase. AA range:170-219
Mol wt	43136
Species reactivity	Human, Mouse, Rat
Clonality	Polyclonal
Recommended application	WB, IHC-p, ELISA
Concentration	1 mg/ml
Full name	ERK 1/2 Antibody
Synonyms	MAPK3; ERK1; PRKM3; Mitogen-activated protein kinase 3; MAP kinase 3; MAPK 3; ERT2; Extracellular signal-regulated kinase 1; ERK-1; Insulin-stimulated MAP2 kinase; MAP kinase isoform p44; p44-MAPK; Mi

This product is for research use only, not for use in human, therapeutic or diagnostic procedure.

Background

Mitogen-activated protein kinase 3 encoded by MAPK3 is a member of the MAP kinase family. MAP kinases, also known as extracellular signal-regulated kinases (ERKs), act in a signaling cascade that regulates various cellular processes such as proliferation, differentiation, and cell cycle progression in response to a variety of extracellular signals. This kinase is activated by upstream kinases, resulting in its translocation to the nucleus where it phosphorylates nuclear targets. Alternatively spliced transcript variants encoding different protein isoforms have been described.

Recommended Dilution

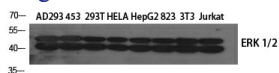
WB: 1: 500 - 1: 2000

IHC: 1: 100 - 1: 300

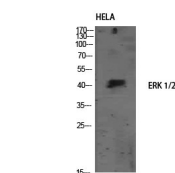
ELISA: 1: 10000

Not yet tested in other applications.

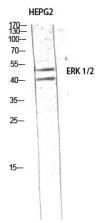
Images



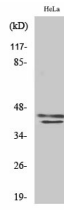
Western Blot analysis of various cells using ERK 1/2 Polyclonal Antibody diluted at 1:1000



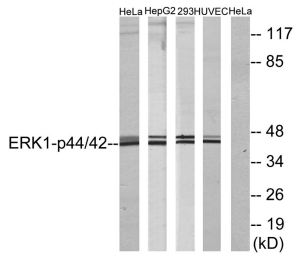
Western Blot analysis of HELA using ERK 1/2 Polyclonal Antibody. Antibody was diluted at 1:1000



Western Blot analysis of HEPG2 using ERK 1/2 Polyclonal Antibody diluted at 1:1000



Western Blot analysis of HuvEc cells using ERK 1/2 Polyclonal Antibody diluted at 1:1000



Western blot analysis of lysates from HeLa/HepG2/293/HuvEc, using p44/42 MAP Kinase Antibody.
The lane on the right is blocked with the synthesized peptide.

Storage

-20°C for one year

501 Changsheng S Rd, Nanhu Dist, Jiaxing, Zhejiang, China

Tel: 86 21 31007137 | E-mail: save@bt-laboratory.com | www.bt-laboratory.com