

## ERK 3 Polyclonal Antibody

### Description

<b>Product type</b>	Primary Antibody
<b>Code</b>	BT-AP03063
<b>Host</b>	Rabbit
<b>Isotype</b>	IgG
<b>Size</b>	20ul, 50ul, 100ul
<b>Immunogen</b>	Recombinant Protein of ERK 3
<b>Mol wt</b>	82681
<b>Species reactivity</b>	Human, Mouse, Rat
<b>Clonality</b>	Polyclonal
<b>Recommended application</b>	WB
<b>Concentration</b>	1 mg/ml
<b>Full name</b>	ERK 3 Antibody
<b>Synonyms</b>	MAPK6; ERK3; PRKM6; Mitogen-activated protein kinase 6; MAP kinase 6; MAPK 6; Extracellular signal-regulated kinase 3; ERK-3; MAP kinase isoform p97; p97-MAPK

**This product is for research use only, not for use in human, therapeutic or diagnostic procedure.**

### Background

The protein encoded by MAPK6 (mitogen-activated protein kinase 6) is a member of the Ser/Thr protein kinase family, and is most closely related to mitogen-activated protein kinases (MAP kinases). MAP kinases also known as extracellular signal-regulated kinases (ERKs), are activated through protein phosphorylation cascades and act as integration points for multiple biochemical signals. This kinase is localized in the nucleus, and has been reported to be activated in fibroblasts upon treatment with serum or phorbol esters.

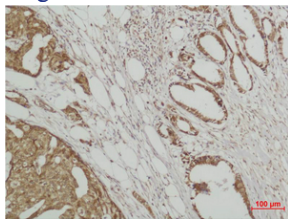
### Recommended Dilution

WB: 1: 500 - 1000

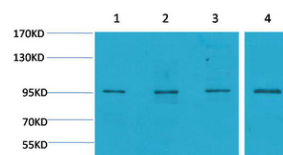
IHC: 1: 200 - 500

Not yet tested in other applications.

### Images



Immunohistochemical analysis of paraffin-embedded human Breast carcinoma using ERK 3 Polyclonal Antibody.



Western blot analysis of 1) HeLa, 2) 293T, 3) 3T3, 4) Rat Brain using ERK 3 Polyclonal Antibody. Secondary antibody was diluted at 1:20000

## Storage

-20°C for one year

501 Changsheng S Rd, Nanhu Dist, Jiaxing, Zhejiang, China

Tel: 86 21 31007137 | E-mail: [save@bt-laboratory.com](mailto:save@bt-laboratory.com) | [www.bt-laboratory.com](http://www.bt-laboratory.com)