

ET-1 Polyclonal Antibody

Description

Product type	Primary Antibody
Code	BT-AP03091
Host	Rabbit
Isotype	IgG
Size	20ul, 50ul, 100ul
Immunogen	The antiserum was produced against synthesized peptide derived from the Internal region of human EDN1. AA range:131-180
Mol wt	24425
Species reactivity	Human
Clonality	Polyclonal
Recommended application	WB, IHC-p, ELISA
Concentration	1 mg/ml
Full name	ET-1 Antibody
Synonyms	EDN1; Endothelin-1; Preproendothelin-1; PPET1

This product is for research use only, not for use in human, therapeutic or diagnostic procedure.

Background

EDN1 encodes a preproprotein that is proteolytically processed to generate a secreted peptide that belongs to the endothelin/sarafotoxin family. This peptide is a potent vasoconstrictor and its cognate receptors are therapeutic targets in the treatment of pulmonary arterial hypertension. Aberrant expression of this gene may promote tumorigenesis. Alternative splicing results in multiple transcript variants.

Recommended Dilution

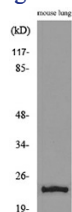
WB: 1: 500 - 1: 2000

ELISA: 1: 20000

IHC-p: 100 - 300

Not yet tested in other applications.

Images



Western blot analysis of lysate from mouse lung, using EDN1 Antibody.



Western Blot analysis of mouse lung cells using ET-1 Polyclonal Antibody. Secondary antibody was diluted at 1:20000

Storage

-20°C for one year

501 Changsheng S Rd, Nanhu Dist, Jiaxing, Zhejiang, China

Tel: 86 21 31007137 | E-mail: save@bt-laboratory.com | www.bt-laboratory.com