

Ethanolamine kinase 2 Polyclonal Antibody

Description

Product type	Primary Antibody
Code	BT-AP03096
Host	Rabbit
Isotype	IgG
Size	20ul, 50ul, 100ul
Immunogen	The antiserum was produced against synthesized peptide derived from human EK12. AA range:51-100
Mol wt	44872
Species reactivity	Human, Mouse
Clonality	Polyclonal
Recommended application	WB, IHC-p, ELISA
Concentration	1 mg/ml
Full name	Ethanolamine kinase 2 Antibody
Synonyms	ETNK2; EK12; HMFT1716; Ethanolamine kinase 2; EK1 2; Ethanolamine kinase-like protein

This product is for research use only, not for use in human, therapeutic or diagnostic procedure.

Background

Ethanolamine kinase 2 encoded by ETNK2 is a member of choline/ethanolamine kinase family which catalyzes the first step of phosphatidylethanolamine (PtdEtn) biosynthesis via the cytidine diphosphate (CDP) ethanolamine pathway. Alternative splicing results in multiple transcript variants.

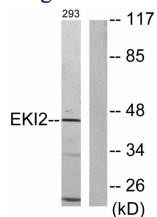
Recommended Dilution

WB: 1: 500 - 1: 2000

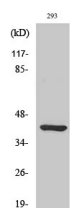
ELISA: 1: 5000

Not yet tested in other applications.

Images



Western blot analysis of lysates from 293 cells, using EK12 Antibody. The lane on the right is blocked with the synthesized peptide.



Western Blot analysis of various cells using Ethanolamine kinase 2 Polyclonal Antibody

Storage

-20°C for one year

