

ETL Polyclonal Antibody

Description

Product type	Primary Antibody
Code	BT-AP03097
Host	Rabbit
Isotype	IgG
Size	20ul, 50ul, 100ul
Immunogen	The antiserum was produced against synthesized peptide derived from human ELTD1. AA range:251-300
Mol wt	77825
Species reactivity	Human
Clonality	Polyclonal
Recommended application	WB, IF, ELISA
Concentration	1 mg/ml
Full name	ETL Antibody
Synonyms	ELTD1; ETL; EGF; latrophilin and seven transmembrane domain-containing protein 1; EGF-TM7-latrophilin-related protein; ETL protein

This product is for research use only, not for use in human, therapeutic or diagnostic procedure.

Background

ADGRL4 (Adhesion G Protein-Coupled Receptor L4) is a Protein Coding gene. Among its related pathways are GPCRs, Class B Secretin-like. GO annotations related to this gene include G-protein coupled receptor activity and transmembrane signaling receptor activity. An important paralog of this gene is ADGRG5.

Recommended Dilution

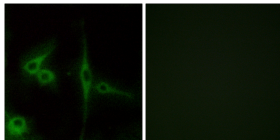
WB: 1: 500 - 1: 2000

IF: 1: 200 - 1: 1000

ELISA: 1: 20000

Not yet tested in other applications.

Images



Immunofluorescence analysis of LOVO cells, using ELTD1 Antibody. The picture on the right is blocked with the synthesized peptide.

Storage

-20°C for one year