

## ETO-2 Polyclonal Antibody

### Description

<b>Product type</b>	Primary Antibody
<b>Code</b>	BT-AP03098
<b>Host</b>	Rabbit
<b>Isotype</b>	IgG
<b>Size</b>	20ul, 50ul, 100ul
<b>Immunogen</b>	The antiserum was produced against synthesized peptide derived from human MTG16. AA range:261-310
<b>Mol wt</b>	71192
<b>Species reactivity</b>	Human, Mouse
<b>Clonality</b>	Polyclonal
<b>Recommended application</b>	IHC-p, ELISA
<b>Concentration</b>	1 mg/ml
<b>Full name</b>	ETO-2 Antibody
<b>Synonyms</b>	CBFA2T3; MTG16; MTGR2; ZMYND4; Protein CBFA2T3; MTG8-related protein 2; Myeloid translocation gene on chromosome 16 protein; hMTG16; Zinc finger MYND domain-containing protein 4

**This product is for research use only, not for use in human, therapeutic or diagnostic procedure.**

### Background

CBFA2T3 (CBFA2/RUNX1 translocation partner 3) encodes a member of the myeloid translocation gene family which interact with DNA-bound transcription factors and recruit a range of corepressors to facilitate transcriptional repression. The t (16; 21) (q24; q22) translocation is one of the less common karyotypic abnormalities in acute myeloid leukemia. The translocation produces a chimeric gene made up of the 5'-region of the runt-related transcription factor 1 gene fused to the 3'-region of CBFA2T3. CBFA2T3 is also a putative breast tumor suppressor. Alternative splicing results in transcript variants.

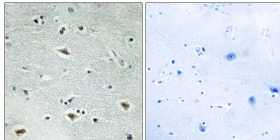
### Recommended Dilution

IHC: 1: 100 - 1: 300

ELISA: 1: 20000

Not yet tested in other applications.

### Images



Immunohistochemistry analysis of paraffin-embedded human brain tissue, using MTG16 Antibody. The picture on the right is blocked with the synthesized peptide.

### Storage

-20°C for one year