

Ezrin Polyclonal Antibody

Description

Product type	Primary Antibody
Code	BT-AP03111
Host	Rabbit
Isotype	IgG
Size	20ul, 50ul, 100ul
Immunogen	The antiserum was produced against synthesized peptide derived from human Ezrin. AA range:534-583
Mol wt	69413
Species reactivity	Human, Mouse, Rat
Clonality	Polyclonal
Recommended application	WB, IF, ELISA
Concentration	1 mg/ml
Full name	Ezrin Antibody
Synonyms	EZR; VIL2; Ezrin; Cytovillin; Villin-2; p81

This product is for research use only, not for use in human, therapeutic or diagnostic procedure.

Background

The cytoplasmic peripheral membrane protein encoded by EZR functions as a protein-tyrosine kinase substrate in microvilli. As a member of the ERM protein family, this protein serves as an intermediate between the plasma membrane and the actin cytoskeleton. This protein plays a key role in cell surface structure adhesion, migration and organization, and it has been implicated in various human cancers. A pseudogene located on chromosome 3 has been identified for EZR. Alternatively spliced variants have also been described for EZR.

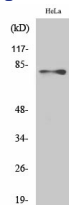
Recommended Dilution

WB: 1: 500 - 1: 2000

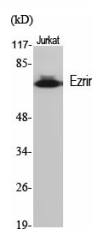
ELISA: 1: 20000

Not yet tested in other applications.

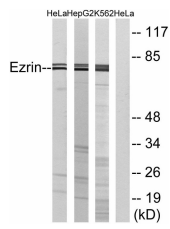
Images



Western Blot analysis of HepG2 cells using Ezrin Polyclonal Antibody diluted at 1:1000



Western Blot analysis of various cells using Ezrin Polyclonal Antibody diluted at 1:1000



Western blot analysis of lysates from HeLa/HepG2/K562, using Ezrin Antibody. The lane on the right is blocked with the synthesized peptide.

Storage

-20°C for one year

501 Changsheng S Rd, Nanhu Dist, Jiaxing, Zhejiang, China

Tel: 86 21 31007137 | E-mail: save@bt-laboratory.com | www.bt-laboratory.com