

INT3 Rabbit Polyclonal Antibody

Description

Product type	Primary Antibody
Code	BT-AP03118
Host	Rabbit
Isotype	IgG
Size	100ul, 50ul, 20ul
Immunogen	Synthesized peptide derived from human INT3
Mol wt	114730
Species reactivity	Human, Mouse
Clonality	Polyclonal
Recommended application	WB
Concentration	1 mg/ml
Full name	INT3
Synonyms	INT3

This product is for research use only, not for use in human, therapeutic or diagnostic procedure.

Background

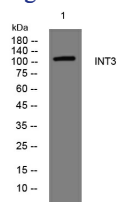
The protein encoded by this gene can form a complex with human single-strand DNA binding proteins 1 or 2 (hSSB1 and hSSB2) and other proteins to mediate genome stability and the DNA damage response. The encoded protein is also part of a multiprotein complex that interacts with the C-terminal domain of RNA polymerase II large subunit to help regulate processing of U1 and U2 small nuclear RNAs.

Recommended Dilution

WB: 1: 500 - 1: 2000

Not yet tested in other applications.

Images



Western blot analysis of lysates from HeLa cells, primary antibody was diluted at 1:1000, 4°C overnight

Storage

-20°C for 1 year

501 Changsheng S Rd, Nanhu Dist, Jiaxing, Zhejiang, China

Tel: 86 21 31007137 | E-mail: save@bt-laboratory.com | www.bt-laboratory.com