

FAM35A/B Polyclonal Antibody

Description

Product type	Primary Antibody
Code	BT-AP03147
Host	Rabbit
Isotype	IgG
Size	20ul, 50ul, 100ul
Immunogen	The antiserum was produced against synthesized peptide derived from human FAM35A/B. AA range:394-443
Mol wt	93705/93675
Species reactivity	Human
Clonality	Polyclonal
Recommended application	WB, ELISA
Concentration	1 mg/ml
Full name	FAM35A/B Antibody
Synonyms	FAM35A; Protein FAM35A; FAM35B; Protein FAM35B

This product is for research use only, not for use in human, therapeutic or diagnostic procedure.

Background

FAM35A (Family With Sequence Similarity 35 Member A) is a Protein Coding gene.

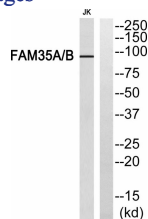
Recommended Dilution

WB: 1: 500 - 1: 2000

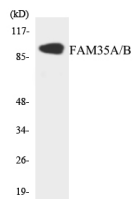
ELISA: 1: 10000

Not yet tested in other applications.

Images



Western blot analysis of FAM35A/B Antibody. The lane on the right is blocked with the FAM35A/B peptide.



Western blot analysis of the lysates from 293 cells using FAM35A/B antibody.

Storage

-20°C for one year