

FAM48A Polyclonal Antibody

Description

| | |
|--------------------------------|---|
| Product type | Primary Antibody |
| Code | BT-AP03153 |
| Host | Rabbit |
| Isotype | IgG |
| Size | 20ul, 50ul, 100ul |
| Immunogen | The antiserum was produced against synthesized peptide derived from the Internal region of human FAM48A. AA range:231-280 |
| Mol wt | 85789 |
| Species reactivity | Human, Mouse, Rat |
| Clonality | Polyclonal |
| Recommended application | WB, ELISA |
| Concentration | 1 mg/ml |
| Full name | FAM48A Antibody |
| Synonyms | FAM48A C13orf19 FP757 |

This product is for research use only, not for use in human, therapeutic or diagnostic procedure.

Background

FAM48A also named as C13orf19 or SUPT20H is a 779 amino acid protein, which belongs to the SPT20 family. FAM48A is required for MAP kinase p38 activation during gastrulation and for starvation-induced ATG9A trafficking during autophagy. FAM48A localizes in the nucleus and is highly expressed in testis, moderately in brain and pituitary gland.

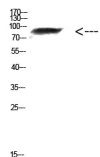
Recommended Dilution

WB: 1: 500 - 2000

ELISA: 1: 10000 - 20000

Not yet tested in other applications.

Images



Western Blot analysis of mouse-kidney cells using Antibody diluted at 1000. Secondary antibody was diluted at 1:20000

Storage

-20°C for one year