

FAM80B Polyclonal Antibody

Description

Product type	Primary Antibody
Code	BT-AP03155
Host	Rabbit
Isotype	IgG
Size	20ul, 50ul, 100ul
Immunogen	The antiserum was produced against synthesized peptide derived from human RIMKB. AA range:177-226
Mol wt	42464
Species reactivity	Human, Mouse, Rat, Monkey
Clonality	Polyclonal
Recommended application	WB, ELISA
Concentration	1 mg/ml
Full name	FAM80B Antibody
Synonyms	RIMKLB; FAM80B; KIAA1238; Beta-citryl-glutamate synthase B; N-acetyl-aspartyl-glutamate synthetase B; NAAG synthetase B; NAAGS; Ribosomal protein S6 modification-like protein B

This product is for research use only, not for use in human, therapeutic or diagnostic procedure.

Background

RIMKLB is a Protein Coding gene. Among its related pathways are Metabolism and Alanine, aspartate and glutamate metabolism. Beta-citryl-glutamate synthase B catalyzes the synthesis of beta-citryl-L-glutamate and N-acetyl-L-aspartyl-L-glutamate. Beta-citryl-L-glutamate is synthesized more efficiently than N-acetyl-L-aspartyl-L-glutamate. GO annotations related to this gene include glutathione synthase activity and citrate-L-glutamate ligase activity. An important paralog of this gene is RIMKLA.

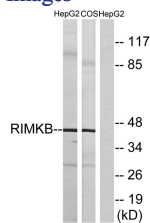
Recommended Dilution

WB: 1: 500 - 1: 2000

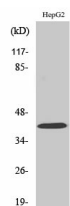
ELISA: 1: 5000

Not yet tested in other applications.

Images



Western blot analysis of lysates from HepG2 and COS cells, using RIMKB Antibody. The lane on the right is blocked with the synthesized peptide.



Western Blot analysis of various cells using FAM80B Polyclonal Antibody diluted at 1:500

Storage

-20°C for one year

501 Changsheng S Rd, Nanhu Dist, Jiaxing, Zhejiang, China

Tel: 86 21 31007137 | E-mail: save@bt-laboratory.com | www.bt-laboratory.com