

Fascin 1 Polyclonal Antibody

Description

| | |
|--------------------------------|--|
| Product type | Primary Antibody |
| Code | BT-AP03163 |
| Host | Rabbit |
| Isotype | IgG |
| Size | 20ul, 50ul, 100ul |
| Immunogen | The antiserum was produced against synthesized peptide derived from the Internal region of human FSCN1. AA range:261-310 |
| Mol wt | 54230 |
| Species reactivity | Human, Mouse, Rat |
| Clonality | Polyclonal |
| Recommended application | WB, IHC-p, ELISA |
| Concentration | 1 mg/ml |
| Full name | Fascin 1 Antibody |
| Synonyms | FSCN1; FAN1; HSN; SNL; Fascin; 55 kDa actin-bundling protein; Singed-like protein; p55 |

This product is for research use only, not for use in human, therapeutic or diagnostic procedure.

Background

FSCN1 encodes a member of the fascin family of actin-binding proteins. Fascin proteins organize F-actin into parallel bundles, and are required for the formation of actin-based cellular protrusions. The fascin actin-bundling protein 1 plays a critical role in cell migration, motility, adhesion and cellular interactions. Expression of this gene is known to be regulated by several microRNAs, and overexpression of this gene may play a role in the metastasis of multiple types of cancer by increasing cell motility. Expression of this gene is also a marker for Reed-Sternberg cells in Hodgkin's lymphoma. A pseudogene of this gene is located on the long arm of chromosome 15.

Recommended Dilution

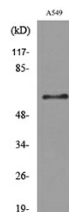
WB: 1: 500 - 1: 2000

IHC-p: 1: 100 - 300

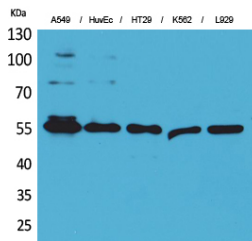
ELISA: 1: 20000

Not yet tested in other applications.

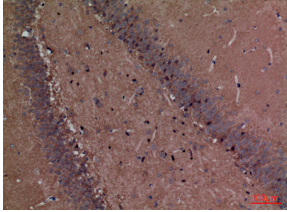
Images



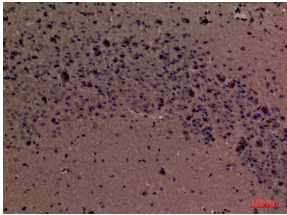
Western blot analysis of lysate from A549 cells, using FSCN1 Antibody.



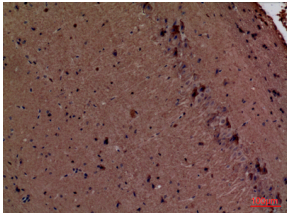
Western Blot analysis of A549, HuvEc, HT29, K562, L929 cells using Fascin 1 Polyclonal Antibody.
Secondary antibody was diluted at 1:20000



Immunohistochemical analysis of paraffin-embedded rat-brain, antibody was diluted at 1:100



Immunohistochemical analysis of paraffin-embedded mouse-brain, antibody was diluted at 1:100



Immunohistochemical analysis of paraffin-embedded mouse-brain, antibody was diluted at 1:100

Storage

-20°C for one year

501 Changsheng S Rd, Nanhu Dist, Jiaxing, Zhejiang, China
Tel: 86 21 31007137 | E-mail: save@bt-laboratory.com | www.bt-laboratory.com