

FASTKD1 Polyclonal Antibody

Description

Product type	Primary Antibody
Code	BT-AP03168
Host	Rabbit
Isotype	IgG
Size	20ul, 50ul, 100ul
Immunogen	The antiserum was produced against synthesized peptide derived from human FAKD1. AA range:561-610
Mol wt	97411
Species reactivity	Human, Mouse, Monkey
Clonality	Polyclonal
Recommended application	WB, ELISA
Concentration	1 mg/ml
Full name	FASTKD1 Antibody
Synonyms	FASTKD1; KIAA1800; FAST kinase domain-containing protein 1

This product is for research use only, not for use in human, therapeutic or diagnostic procedure.

Background

FASTKD1 is a gene on chromosome 2q31 that encodes an enzyme belonging to the FAST kinase domain-containing protein family that contains a RAP domain. FAST kinase domain-containing protein 1 is part of the FASTKD family, which is known for regulating the energy balance of mitochondria under stress. FASTKD1 is also an RNA-binding protein and has been associated with endometrial cancer. GO annotations related to this gene include poly (A) RNA binding and protein kinase activity. An important paralog of FASTKD1 is TBRG4.

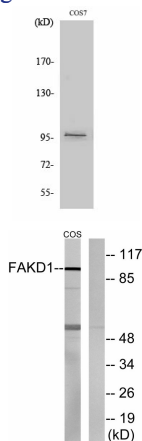
Recommended Dilution

WB: 1: 500 - 1: 2000

ELISA: 1: 10000

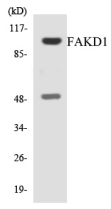
Not yet tested in other applications.

Images



Western Blot analysis of various cells using FASTKD1 Polyclonal Antibody

Western blot analysis of lysates from COS7 cells, using FAKD1 Antibody. The lane on the right is blocked with the synthesized peptide.



Western blot analysis of the lysates from HT-29 cells using FAKD1 antibody.

Storage

-20°C for one year

501 Changsheng S Rd, Nanhu Dist, Jiaxing, Zhejiang, China

Tel: 86 21 31007137 | E-mail: save@bt-laboratory.com | www.bt-laboratory.com