

## FASTKD2 Polyclonal Antibody

### Description

<b>Product type</b>	Primary Antibody
<b>Code</b>	BT-AP03169
<b>Host</b>	Rabbit
<b>Isotype</b>	IgG
<b>Size</b>	20ul, 50ul, 100ul
<b>Immunogen</b>	The antiserum was produced against synthesized peptide derived from human FAKD2. AA range:171-220
<b>Mol wt</b>	81463
<b>Species reactivity</b>	Human
<b>Clonality</b>	Polyclonal
<b>Recommended application</b>	WB, IHC-p, ELISA
<b>Concentration</b>	1 mg/ml
<b>Full name</b>	FASTKD2 Antibody
<b>Synonyms</b>	FASTKD2; KIAA0971; FAST kinase domain-containing protein 2

**This product is for research use only, not for use in human, therapeutic or diagnostic procedure.**

### Background

FASTKD2 encodes FAST kinase domain-containing protein 2 that is localized in the mitochondrial inner compartment and that may play a role in mitochondrial apoptosis. Nonsense mutations have been reported to result in cytochrome c oxidase deficiency.

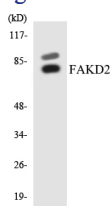
### Recommended Dilution

WB: 1: 500 - 1: 2000

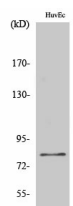
ELISA: 1: 5000

Not yet tested in other applications.

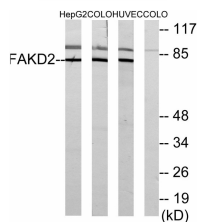
### Images



Western blot analysis of the lysates from COLO205 cells using FAKD2 antibody.



Western Blot analysis of various cells using FASTKD2 Polyclonal Antibody



Western blot analysis of lysates from HUVEC, HepG2, and COLO cells, using FAKD2 Antibody. The lane on the right is blocked with the synthesized peptide.

## Storage

-20°C for one year

501 Changsheng S Rd, Nanhu Dist, Jiaxing, Zhejiang, China

Tel: 86 21 31007137 | E-mail: [save@bt-laboratory.com](mailto:save@bt-laboratory.com) | [www.bt-laboratory.com](http://www.bt-laboratory.com)