

## FBP2 Polyclonal Antibody

### Description

<b>Product type</b>	Primary Antibody
<b>Code</b>	BT-AP03178
<b>Host</b>	Rabbit
<b>Isotype</b>	IgG
<b>Size</b>	20ul, 50ul, 100ul
<b>Immunogen</b>	Synthesized peptide derived from the N-terminal region of human FBP2.
<b>Mol wt</b>	73146
<b>Species reactivity</b>	Human, Mouse, Rat
<b>Clonality</b>	Polyclonal
<b>Recommended application</b>	WB, ELISA
<b>Concentration</b>	1 mg/ml
<b>Full name</b>	FBP2 Antibody
<b>Synonyms</b>	KHSRP; FUBP2; Far upstream element-binding protein 2; FUSE-binding protein 2; KH type-splicing regulatory protein; KSRP; p75

This product is for research use only, not for use in human, therapeutic or diagnostic procedure.

### Background

KHSRP encodes a multifunctional RNA-binding protein, Far upstream element-binding protein 2, implicated in a variety of cellular processes, including transcription, alternative pre-mRNA splicing, and mRNA localization

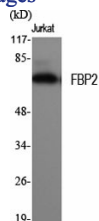
### Recommended Dilution

WB: 1: 500 - 1: 2000

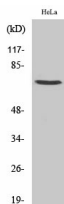
ELISA: 1: 10000

Not yet tested in other applications.

### Images



Western Blot analysis of various cells using FBP2 Polyclonal Antibody



Western Blot analysis of HuvEc cells using FBP2 Polyclonal Antibody

### Storage

-20°C for one year

