

## FBP3 Polyclonal Antibody

### Description

<b>Product type</b>	Primary Antibody
<b>Code</b>	BT-AP03179
<b>Host</b>	Rabbit
<b>Isotype</b>	IgG
<b>Size</b>	20ul, 50ul, 100ul
<b>Immunogen</b>	The antiserum was produced against synthesized peptide derived from human FUBP3. AA range:201-250
<b>Mol wt</b>	61640
<b>Species reactivity</b>	Human, Mouse, Rat
<b>Clonality</b>	Polyclonal
<b>Recommended application</b>	WB, IHC-p, ELISA
<b>Concentration</b>	1 mg/ml
<b>Full name</b>	FBP3 Antibody
<b>Synonyms</b>	FUBP3; FBP3; Far upstream element-binding protein 3; FUSE-binding protein 3

**This product is for research use only, not for use in human, therapeutic or diagnostic procedure.**

### Background

FUBP3 is a Protein Coding gene. Far upstream element-binding protein 3 may interact with single-stranded DNA from the far-upstream element (FUSE). May activate gene expression. GO annotations related to this gene include nucleic acid binding and RNA binding. An important paralog of this gene is KHSRP.

### Recommended Dilution

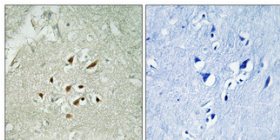
WB: 1: 500 - 1: 2000

IHC: 1: 100 - 1: 300

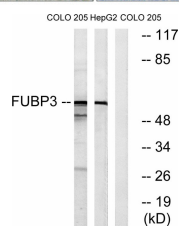
ELISA: 1: 20000

Not yet tested in other applications.

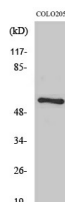
### Images



Immunohistochemical analysis of paraffin-embedded Human brain. Antibody was diluted at 1:100(4° overnight). High-pressure and temperature Tris-EDTA,pH8.0 was used for antigen retrieval. Negative control (right) obtained from antibody was pre-absorbed by immunogen peptide.



Western blot analysis of lysates from COLO and HepG2 cells, using FUBP3 Antibody. The lane on the right is blocked with the synthesized peptide.



Western Blot analysis of various cells using FUBP3 Polyclonal Antibody cells nucleus.

## Storage

-20°C for one year

501 Changsheng S Rd, Nanhu Dist, Jiaxing, Zhejiang, China

Tel: 86 21 31007137 | E-mail: [save@bt-laboratory.com](mailto:save@bt-laboratory.com) | [www.bt-laboratory.com](http://www.bt-laboratory.com)