

JOS2 Rabbit Polyclonal Antibody

Description

Product type	Primary Antibody
Code	BT-AP03184
Host	Rabbit
Isotype	IgG
Size	100ul, 50ul, 20ul
Immunogen	Synthesized peptide derived from human JOS2
Mol wt	20680
Species reactivity	Human, Mouse
Clonality	Polyclonal
Recommended application	WB
Concentration	1 mg/ml
Full name	JOS2
Synonyms	JOS2

This product is for research use only, not for use in human, therapeutic or diagnostic procedure.

Background

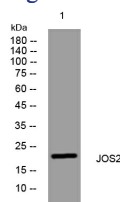
This gene encodes a protein containing a Josephin domain. Josephin domain-containing proteins are deubiquitinating enzymes which catalyze the hydrolysis of the bond between the C-terminal glycine of the ubiquitin peptide and protein substrates. Alternatively spliced transcript variants encoding multiple isoforms have been observed for this gene.

Recommended Dilution

WB: 1: 500 - 1: 2000

Not yet tested in other applications.

Images



Western blot analysis of lysates from DU145 cells, primary antibody was diluted at 1:1000, 4°C overnight

Storage

-20°C for 1 year

501 Changsheng S Rd, Nanhu Dist, Jiaxing, Zhejiang, China

Tel: 86 21 31007137 | E-mail: save@bt-laboratory.com | www.bt-laboratory.com