

## FEN-1 Polyclonal Antibody

### Description

Product type	Primary Antibody
Code	BT-AP03192
Host	Rabbit
Isotype	IgG
Size	20ul, 50ul, 100ul
Immunogen	The antiserum was produced against synthesized peptide derived from human FEN1. AA range:86-135
Mol wt	42593
Species reactivity	Human, Mouse, Rat
Clonality	Polyclonal
Recommended application	WB, IHC-p, IF, ELISA
Concentration	1 mg/ml
Full name	FEN-1 Antibody
Synonyms	FEN1; RAD2; Flap endonuclease 1; FEN-1; DNase IV; Flap structure-specific endonuclease 1; Maturation factor 1; MF1; hFEN-1

This product is for research use only, not for use in human, therapeutic or diagnostic procedure.

### Background

Flap endonuclease 1 encoded by FEN1 removes 5' overhanging flaps in DNA repair and processes the 5' ends of Okazaki fragments in lagging strand DNA synthesis. Direct physical interaction between this protein and AP endonuclease 1 during long-patch base excision repair provides coordinated loading of the proteins onto the substrate, thus passing the substrate from one enzyme to another. The protein is a member of the XPG/RAD2 endonuclease family and is one of ten proteins essential for cell-free DNA replication. DNA secondary structure can inhibit flap processing at certain trinucleotide repeats in a length-dependent manner by concealing the 5' end of the flap that is necessary for both binding and cleavage by the protein encoded by this gene. Therefore, secondary structure can deter the protective function of this protein, leading to site-specific trinucleotide expansions.

### Recommended Dilution

WB: 1: 500 - 1: 2000

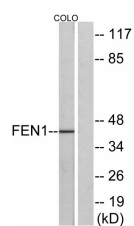
IHC: 1: 100 - 1: 300

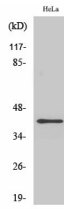
IF: 1: 200 - 1: 1000

ELISA: 1: 20000

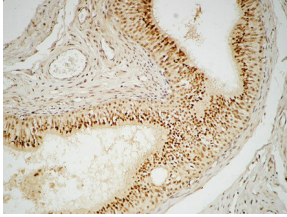
Not yet tested in other applications.

### Images

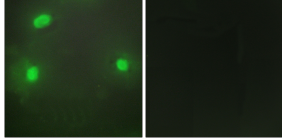




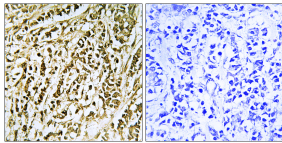
Western Blot analysis of HuvEc cells using FEN-1 Polyclonal Antibody diluted at 1:500



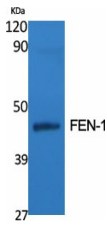
Immunohistochemical analysis of paraffin-embedded Human testis. 1, Antibody was diluted at 1:100(4° overnight). 2, High-pressure and temperature EDTA, pH8.0 was used for antigen retrieval. 3,Secondary antibody was diluted at 1:200(room temperature, 30min).



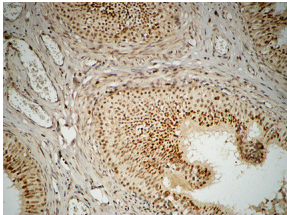
Immunofluorescence analysis of HeLa cells, using FEN1 Antibody. The picture on the right is blocked with the synthesized peptide.



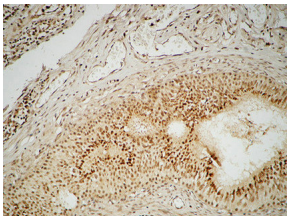
Immunohistochemistry analysis of paraffin-embedded human breast carcinoma tissue, using FEN1 Antibody. The picture on the right is blocked with the synthesized peptide.



Western Blot analysis of various cells using FEN-1 Polyclonal Antibody diluted at 1:500



Immunohistochemical analysis of paraffin-embedded Human testis. 1, Antibody was diluted at 1:100(4° overnight). 2, High-pressure and temperature EDTA, pH8.0 was used for antigen retrieval. 3,Secondary antibody was diluted at 1:200(room temperature, 30min).



Immunohistochemical analysis of paraffin-embedded Human testis. 1, Antibody was diluted at 1:100(4° overnight). 2, High-pressure and temperature EDTA, pH8.0 was used for antigen retrieval. 3,Secondary antibody was diluted at 1:200(room temperature, 30min).

## Storage

-20°C for one year

501 Changsheng S Rd, Nanhu Dist, Jiaxing, Zhejiang, China

Tel: 86 21 31007137 | E-mail: [save@bt-laboratory.com](mailto:save@bt-laboratory.com) | [www.bt-laboratory.com](http://www.bt-laboratory.com)