

Fes Polyclonal Antibody

Description

Product type	Primary Antibody
Code	BT-AP03196
Host	Rabbit
Isotype	IgG
Size	20ul, 50ul, 100ul
Immunogen	The antiserum was produced against synthesized peptide derived from human FES. AA range:131-180
Mol wt	93497
Species reactivity	Human, Mouse
Clonality	Polyclonal
Recommended application	WB, IHC-p, ELISA
Concentration	1 mg/ml
Full name	Fes Antibody
Synonyms	FES; FPS; Tyrosine-protein kinase Fes/Fps; Feline sarcoma/Fujinami avian sarcoma oncogene homolog; Proto-oncogene c-Fes; Proto-oncogene c-Fps; p93c-fes

This product is for research use only, not for use in human, therapeutic or diagnostic procedure.

Background

FES encodes the human cellular counterpart of a feline sarcoma retrovirus protein with transforming capabilities. The gene product has tyrosine-specific protein kinase activity and that activity is required for maintenance of cellular transformation. Its chromosomal location has linked it to a specific translocation event identified in patients with acute promyelocytic leukemia but it is also involved in normal hematopoiesis as well as growth factor and cytokine receptor signaling. Alternative splicing results in multiple variants encoding different isoforms.

Recommended Dilution

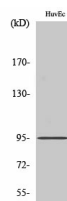
WB: 1: 500 - 1: 2000

IHC: 1: 100 - 1: 300

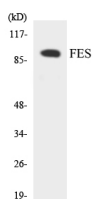
ELISA: 1: 20000

Not yet tested in other applications.

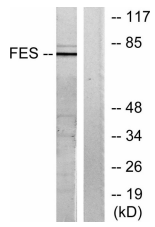
Images



Western Blot analysis of various cells using Fes Polyclonal Antibody



Western blot analysis of the lysates from HUVEC cells using FES antibody.



Western blot analysis of lysates from HUVEC cells, treated with serum 20% 30', using FES Antibody. The lane on the right is blocked with the synthesized peptide.

Storage

-20°C for one year

501 Changsheng S Rd, Nanhu Dist, Jiaxing, Zhejiang, China

Tel: 86 21 31007137 | E-mail: save@bt-laboratory.com | www.bt-laboratory.com