

FEV Polyclonal Antibody

Description

Product type	Primary Antibody
Code	BT-AP03198
Host	Rabbit
Isotype	IgG
Size	20ul, 50ul, 100ul
Immunogen	Synthesized peptide derived from the N-terminal region of human FEV.
Mol wt	25030
Species reactivity	Human
Clonality	Polyclonal
Recommended application	WB, ELISA
Concentration	1 mg/ml
Full name	FEV Antibody
Synonyms	FEV; PET1; Protein FEV; Fifth Ewing variant protein; PC12 ETS domain-containing transcription factor 1; PC12 ETS factor 1; Pet-1

This product is for research use only, not for use in human, therapeutic or diagnostic procedure.

Background

FEV (FEV, ETS transcription factor) belongs to the ETS transcription factor family. ETS family members have a highly conserved 85-amino acid ETS domain that binds purine-rich DNA sequences. The alanine-rich C-terminus of this gene indicates that it may act as a transcription repressor. FEV is exclusively expressed in neurons of the central serotonin (5-HT) system, a system implicated in the pathogeny of such psychiatric diseases as depression, anxiety, and eating disorders. In some types of Ewing tumors, FEV is fused to the Ewing sarcoma (EWS) gene following chromosome translocations.

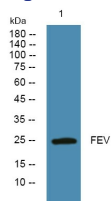
Recommended Dilution

WB: 1: 500 - 1: 2000

ELISA: 1: 40000

Not yet tested in other applications.

Images



Western blot analysis of lysates from K562 cells, primary antibody was diluted at 1:1000, 4° over night

Storage

-20°C for one year