

FGF-16 Polyclonal Antibody

Description

Product type	Primary Antibody
Code	BT-AP03205
Host	Rabbit
Isotype	IgG
Size	20ul, 50ul, 100ul
Immunogen	The antiserum was produced against synthesized peptide derived from the Internal region of human FGF16. AA range:141-190
Mol wt	23759
Species reactivity	Human, Mouse, Rat
Clonality	Polyclonal
Recommended application	WB, IHC-p, ELISA
Concentration	1 mg/ml
Full name	FGF-16 Antibody
Synonyms	FGF16; Fibroblast growth factor 16; FGF-16

This product is for research use only, not for use in human, therapeutic or diagnostic procedure.

Background

FGF16 encodes a member of a family of proteins that are involved in a variety of biological processes, including embryonic development, cell growth, morphogenesis, tissue repair, tumor growth and invasion. This gene is expressed in cardiac cells and is required for proper heart development. Mutation in this gene was also observed in individuals with metacarpal 4-5 fusion.

Recommended Dilution

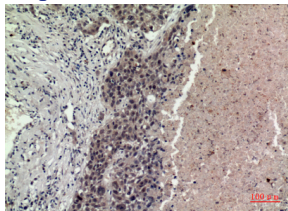
WB: 1: 500 - 1: 2000

IHC-p: 1: 100 - 1: 300

ELISA: 1: 20000

Not yet tested in other applications.

Images



Immunohistochemical analysis of paraffin-embedded human-lung, antibody was diluted at 1:100



Western Blot analysis of K562 cells using FGF-16 Polyclonal Antibody. Secondary antibody was diluted at 1:20000

Storage

-20°C for one year

501 Changsheng S Rd, Nanhu Dist, Jiaxing, Zhejiang, China

Tel: 86 21 31007137 | E-mail: save@bt-laboratory.com | www.bt-laboratory.com