

FGF-23 Polyclonal Antibody

Description

Product type	Primary Antibody
Code	BT-AP03214
Host	Rabbit
Isotype	IgG
Size	20ul, 50ul, 100ul
Immunogen	The antiserum was produced against synthesized peptide derived from the C-terminal region of human FGF23. AA range:181-230
Mol wt	27954
Species reactivity	Human
Clonality	Polyclonal
Recommended application	WB, ELISA
Concentration	1 mg/ml
Full name	FGF-23 Antibody
Synonyms	FGF23; HYPF; Fibroblast growth factor 23; FGF-23; Phosphatonin; Tumor-derived hypophosphatemia-inducing factor

This product is for research use only, not for use in human, therapeutic or diagnostic procedure.

Background

FGF23 encodes a member of the fibroblast growth factor family of proteins, which possess broad mitogenic and cell survival activities and are involved in a variety of biological processes. The product of this gene regulates phosphate homeostasis and transport in the kidney. The full-length, functional protein may be deactivated via cleavage into N-terminal and C-terminal chains. Mutation of this cleavage site causes autosomal dominant hypophosphatemic rickets (ADHR). Mutations in this gene are also associated with hyperphosphatemic familial tumoral calcinosis (HFTC).

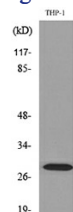
Recommended Dilution

WB: 1: 500 - 1: 2000

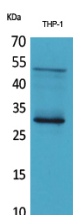
ELISA: 1: 20000

Not yet tested in other applications.

Images



Western blot analysis of lysate from THP-1 cells, using FGF23 Antibody.



Western blot analysis of THP-1 cells using FGF-23 Polyclonal Antibody. Secondary antibody was diluted at 1:20000

Storage

-20°C for one year

501 Changsheng S Rd, Nanhu Dist, Jiaxing, Zhejiang, China

Tel: 86 21 31007137 | E-mail: save@bt-laboratory.com | www.bt-laboratory.com